

## Mounting Instructions for JD Units

### With liquid application tube on front of shank

#### Parts List

1. XP Stiffener Bracket
2. Zip-Tie
3. Bolt, M10-1.5 x 40
4. Nut, M10-1.5


**Step 1**

Remove gauge wheels and disk openers as directed in:  
 "UNIVERSAL BRACKET MOUNTING INSTRUCTIONS."

**Step 2**

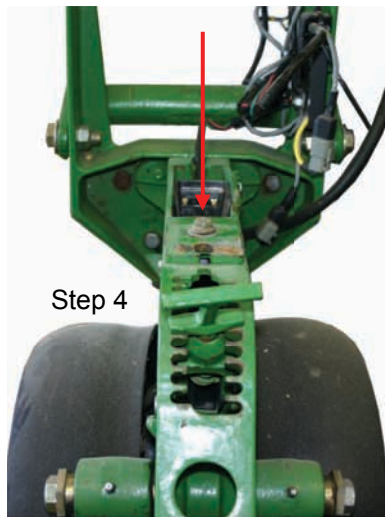
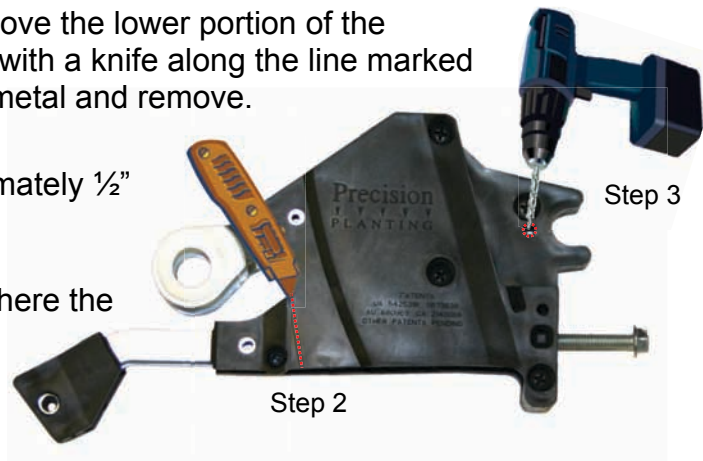
Before mounting universal bracket, remove the lower portion of the bracket below the large ring by scoring with a knife along the line marked on the plastic. After scoring, bend the metal and remove.

**Step 3**

Drill a 7/32" hole in the bracket approximately 1/2" in from the round notch on the bracket.

**Step 4**

Remove the M10 bolt on the row unit where the seed box locks on the planter unit.



Step 4

**Step 5**

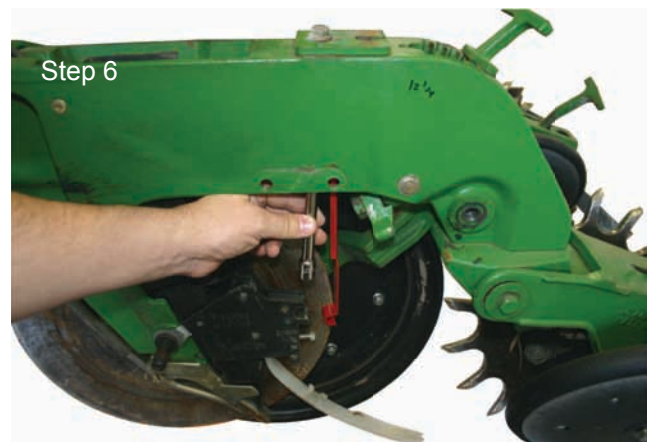
Replace that bolt with the 40mm bolt provided in the package, and tighten firmly.



Step 5

**Step 6**

Attach the XP Rear Mount Stiffening bracket provided by placing it up through the bottom of the row unit and onto the thread of the M10 bolt. Use a 15mm socket and short extension to install the nut from bottom up. Do not tighten the nut completely.



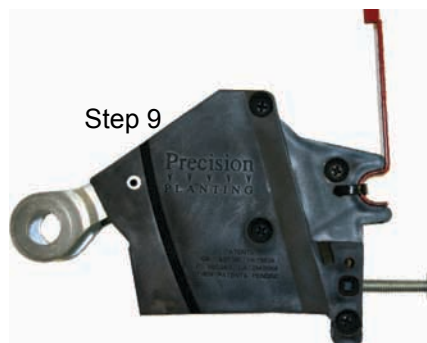
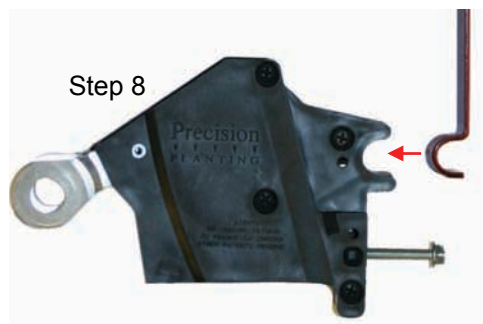
Step 6

Questions? Check the website: [www.precisionplanting.com](http://www.precisionplanting.com) or call us at 309-925-5050.

**Step 7** Attach the 2 halves of the firmer bracket on the shafts that hold the disk openers (see “UNIVERSAL BRACKET MOUNTING INSTRUCTIONS.”). Fasten the bracket together with 4 screws and tighten firmly.

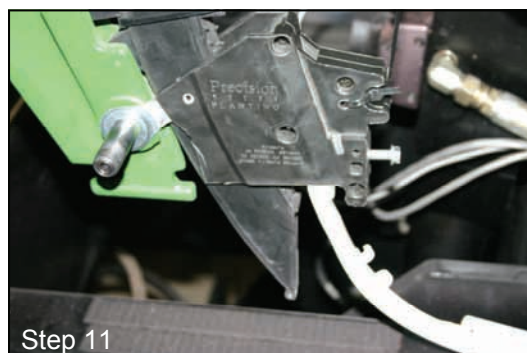


**Step 8** Place the lower end of the XP Rear Mount Stiffening bracket inside the rounded notch.



**Step 9** Next, run the zip tie provided through the 7/32” hole in the Universal bracket and route the zip tie around the metal stiffener bracket. Position the zip tie so the knot is toward the back and inside of the stiffener bracket. Cut off excess length of Ziptie.

**Step 10** Tighten the upper nut firmly with the 15mm socket and extension.



**Step 11** Install the firmer tail and set tension screw according to “adjusting firmer tension” on “UNIVERSAL BRACKET MOUNTING INSTRUCTIONS.”



Questions? Check the website: [www.precisionplanting.com](http://www.precisionplanting.com) or call us at 309-925-5050.