

Installation Instructions for JD 17X5 Quick Attach Firmer Bracket – 150109

Parts List

Part Number	Description	Quantity
150100	Quick Attach Keeton Bracket Assembly	1
160042	Hardware Kit	1
Included Hardware		
0142876	8 X 1.25" Plastite Screw	3

Compatible with WaveVision® sensors or other seedtubes/sensors

1) Row Unit Preparation

- a) Raise the planter and remove both gauge wheels and disc openers from the row unit.
- b) Inspect the seed tube guard and seed tube. If these are worn, replace them now while they are easily accessible. Remove the seed tube for easier installation.
- c) Remove all disc opener shims.

2) Quick Attach Firmer Bracket Installation

- a) Locate the bracket pieces and cut the zip tie securing them together. The bracket kit part number is molded onto the left piece. Confirm it is the correct kit for the specific row unit. Refer to Illustration 1.

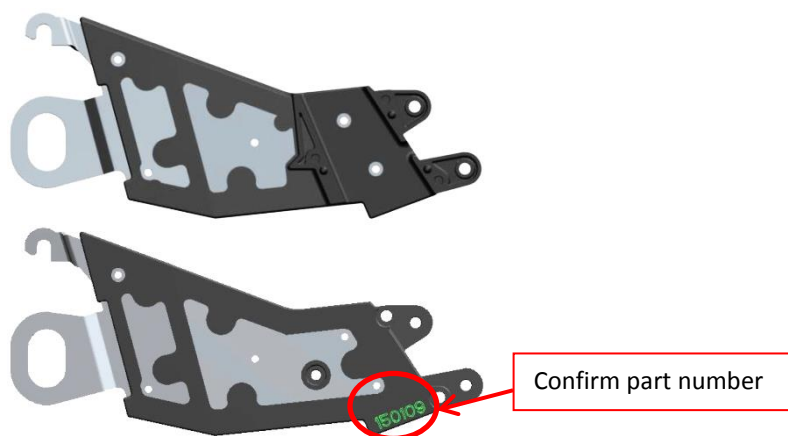


Illustration 1 – Quick Attach Firmer Bracket

- b) Slide the eyelet on each half of the firmer bracket onto the respective opening disk shaft. Refer to Illustration 2.

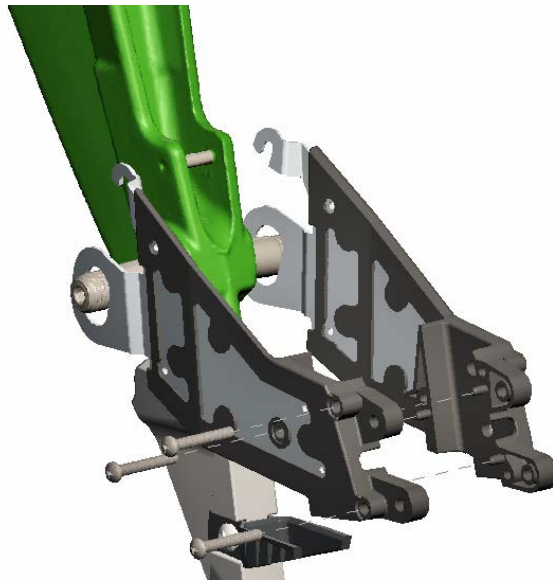


Illustration 2 – Align Quick Attach Firmer Bracket

- c) Secure the upper bracket hooks to the lower seed tube pin on the shank and assemble the bracket pieces with the three (3) supplied #8 X 1.25" screws. Refer to Illustration 3.

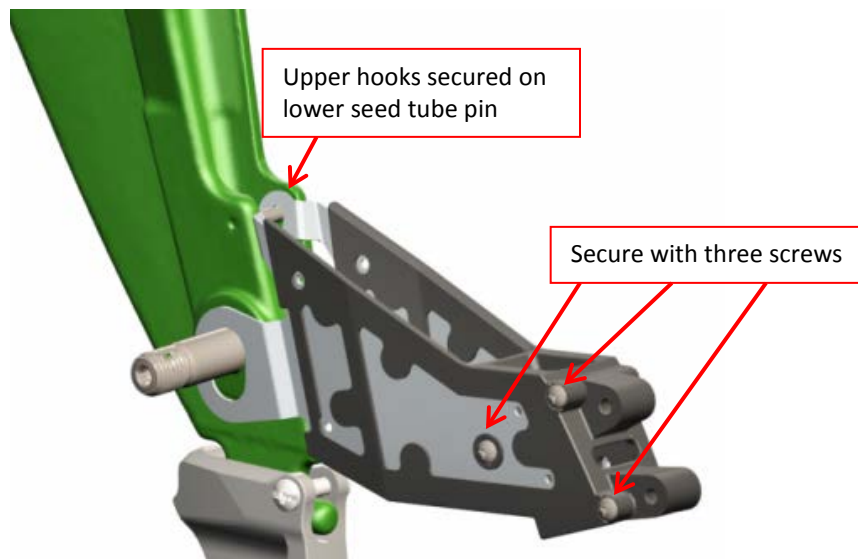


Illustration 3 – Quick Attach Keeton Firmer Bracket Installed

3) Installation Completion

- a) Reinstall the seed tube and ensure it is fully seated on lower pin.
- b) Reinstall the opening disks with 1.5"-2" of contact (check multiple locations). Shim disks as necessary. Ensure firmer bracket remains fully seated on the lower seed tube pin when tightening. Apply downward force on the rear of the bracket when installing the opening discs.

Note: The Keeton bracket eyelets will serve as a shim for each disk. General recommendation would be one less shim (per side) than previously installed. Install shims outside of firmer bracket.

- c) Reinstall both gauge wheels according to Manufacturer's instructions.

Setting the Contact between the Disk Openers: To check disk contact, use two pieces of paper and slide one piece in from the top of the disk openers and one from the bottom. Then slide them in toward each other, until they pinch between the disk openers. Measure the distance between the two pieces of paper. If the gap is too wide, you will need to add a shim to the disk opener. If the gap is too narrow you will need to remove a shim. Adjust shims as needed to get the correct contact as stated in the planter manual.

Note: To improve the seed trench "vee", make sure the opener disks are not worn. If the diameter is less than manufacturers suggested dimension, replace them.

Correct Contact Between Disk Openers

- 3.0 mm blade thickness – 1.5"–2.5"
- 3.5 mm blade thickness – 1"–1.5"

