

396-6561Y1



SurePoint
Ag Systems

PRO 700 IntelliView IV Task Control Setup and Wizard



NOTICE

Operator should read this manual before operating the system.



Table Of Contents

Software & Unlock Activation

- Activating and unlocking software.....2-7

PRO 700 Setup

- Setting Up Your PRO 700.....8-11

Sentinel Setup

- Setting Up Sentinel.....12

PRO 700 Wizard Setup

- PRO 700 Wizard.....13-21

Product and Manual Task Control

- Product and Manual Task Control Setup22-27

A

Software & Un-
lock Activation

B

PRO700
Setup

C

Sentinel Setup

D

PRO 700
Wizard

E

Product and
Manual Task
Control

General Description

You have purchased a SurePoint Sentinel system for your equipment. This system will be controlled by the Sentinel ECU through your in-cab ISO display. In this manual we will be showing you step by step how to set up task control on your PRO 700 ISO display. **There are TWO ways shown in this manual**, the task control setup With Wizards or the task control setup. **Wizards** will take you step by step through your task control setup. Option two is to set up your task control, screen by screen, using the manual provided.

A

Software & Un-
lock Activation

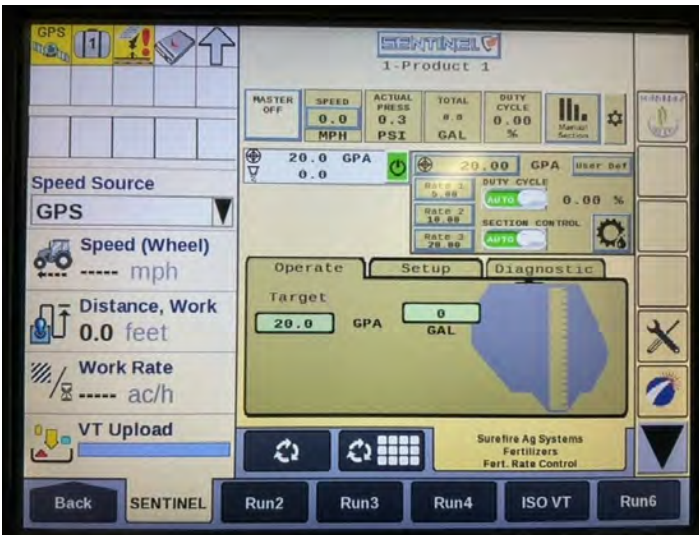


Ensure a factory approved USB is installed – **Envoy 4 GB – CNH Part Number-4796267**. Purchase at a CNH Dealership – format to FAT 32.

NOTE: Do not install or remove the USB when the display is powered on. This can damage the USB and/or display.

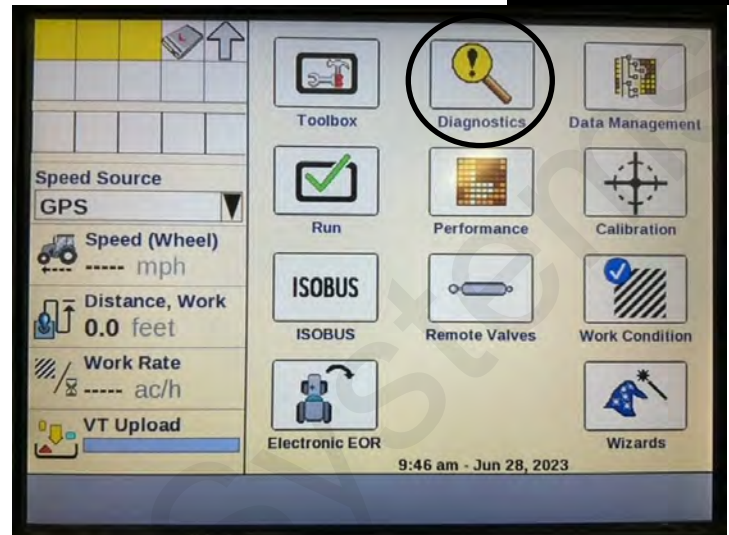
A

Software & Un-lock Activation



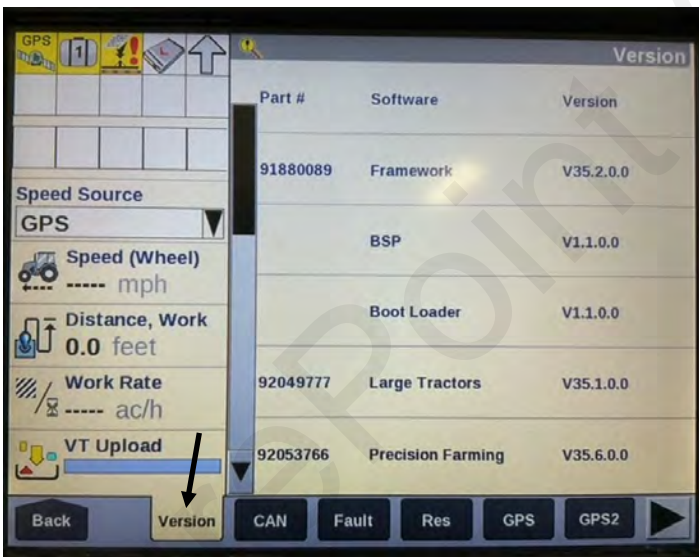
STEP 1

Run screen example with Sentinel showing.



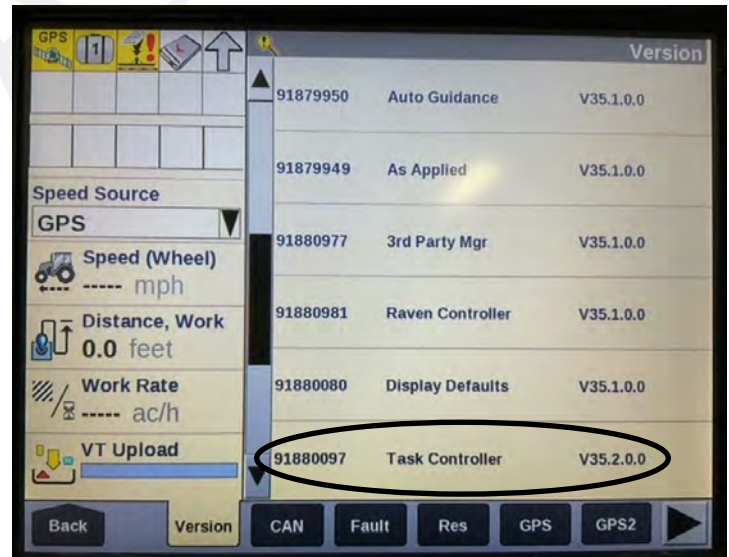
STEP 2

Press **Back** soft key on the **RUN** screen to show **HOME** screen, then press **Diagnostics**.



STEP 3

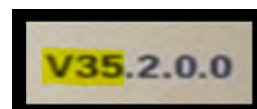
Home Screen < Diagnostics < Version
Software version information that is loaded on the display.



STEP 4

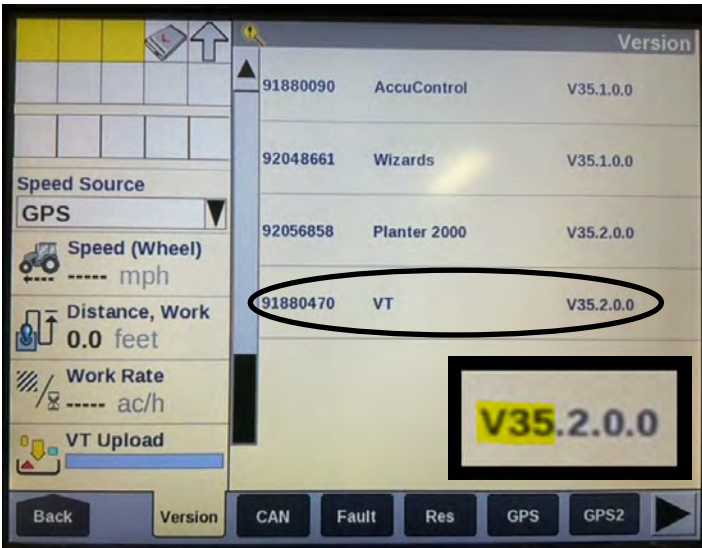
Use the arrows to verify the Task Control software is installed on the display.

NOTE: V32.0.0.0 or newer.



A

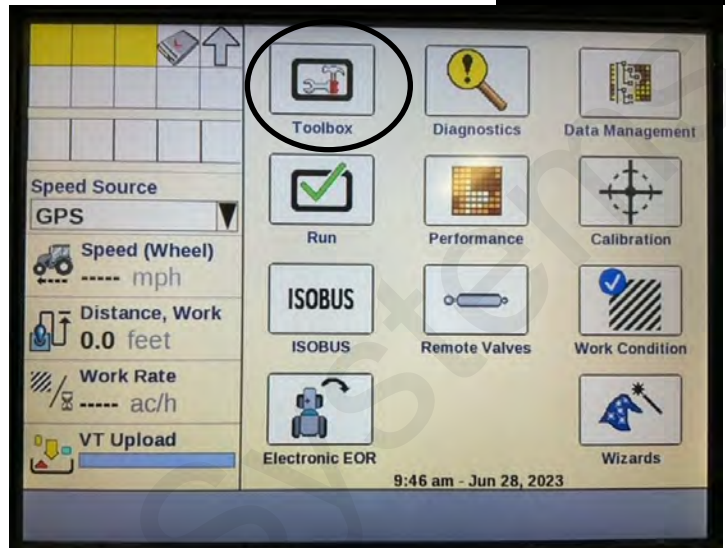
Software & Un-lock Activation



STEP 5

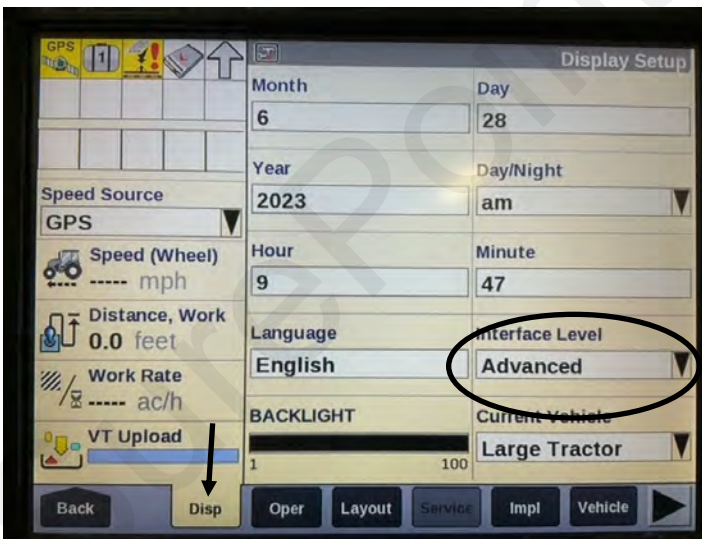
Scroll down further to verify the VT software is installed on the display.

NOTE: V 32.0.0.0 or newer.



STEP 6

Touch back to Home Screen < Toolbox

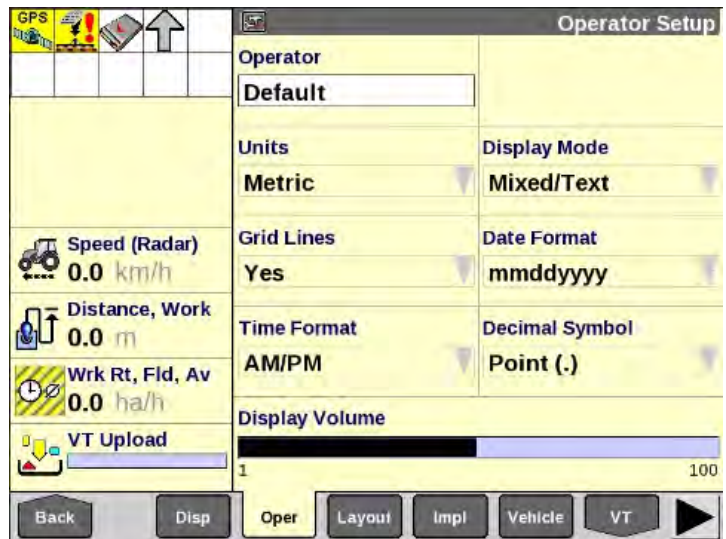


STEP 7

Home Screen < Toolbox < Display

Set interface level to **Advanced**.

This allows the display to do as-applied mapping, section control, and advanced functions.



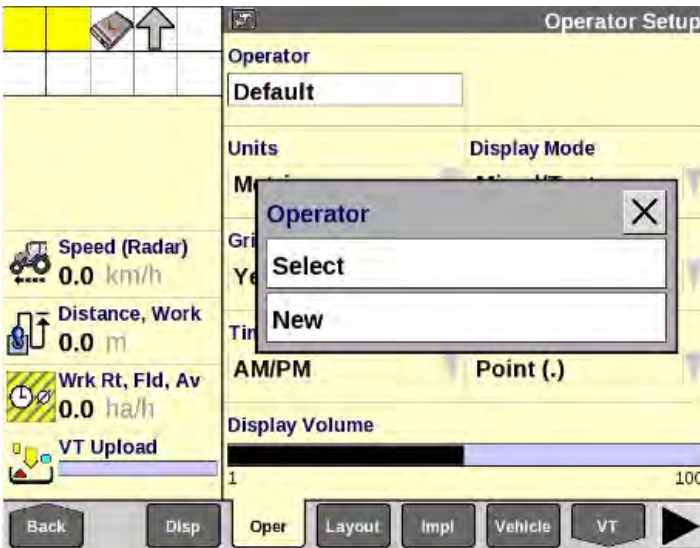
STEP 8

Home Screen < Toolbox < Oper

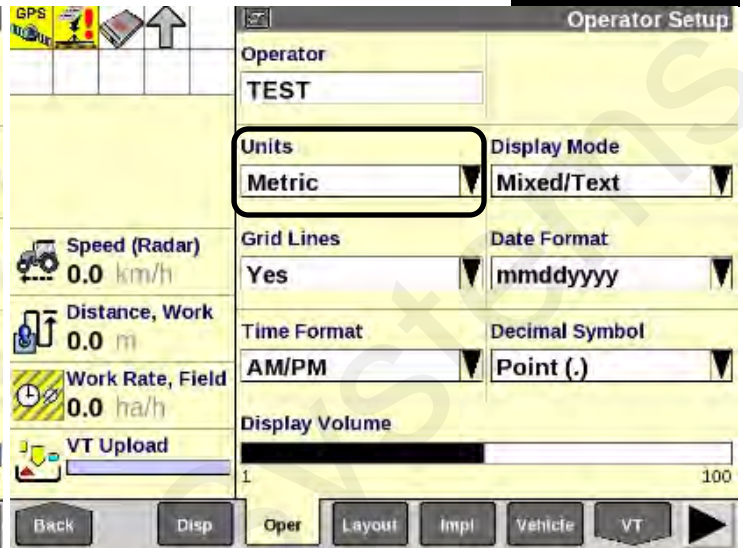
Setup operator. Example: Default.

A

Software & Un-lock Activation



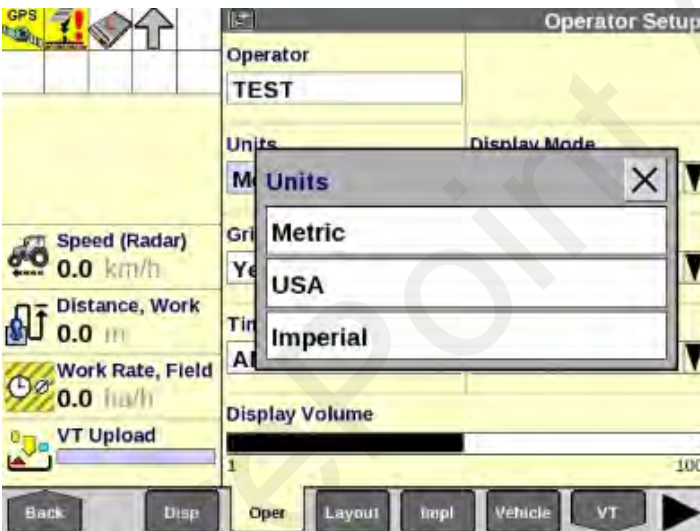
STEP 9



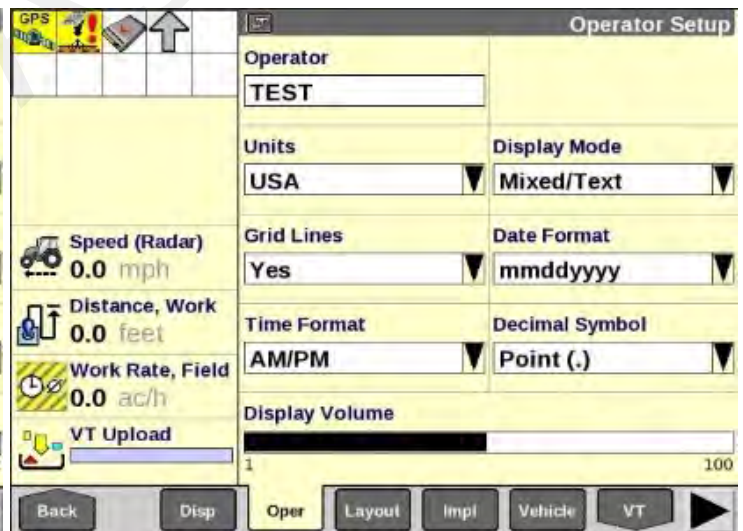
STEP 10

Select **New** and type in operator name.
Example: TEST.

Change Units from Metric to USA.



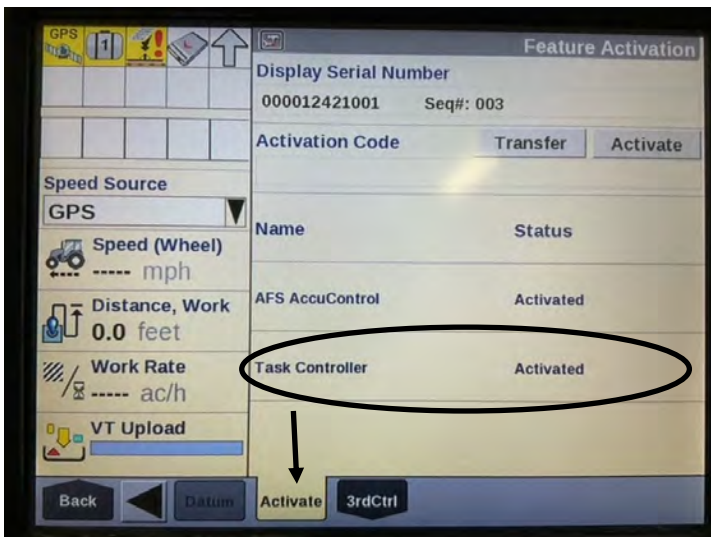
STEP 11



STEP 12

Select USA.

Ensure everything is correct.



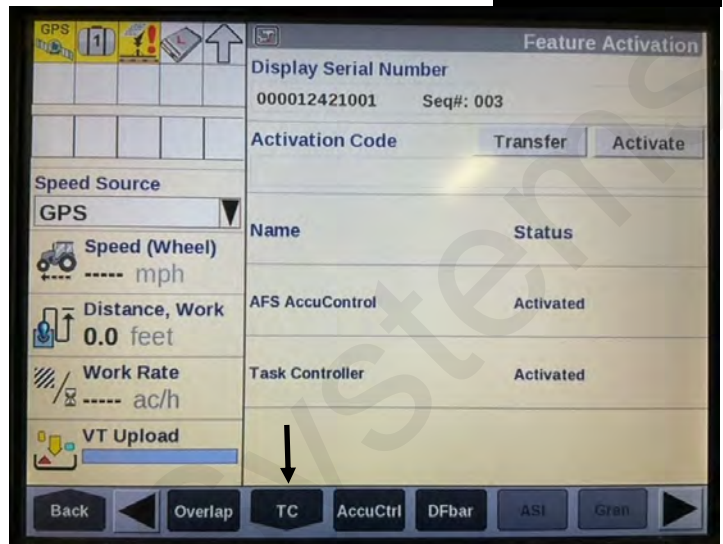
STEP 13

Home Screen < Toolbox < Activate

Use the arrows to navigate to the Activate tab. This will show if the Task Control Unlock is installed and activated.

Task Controller has to be Activated for all Task control operations to function.

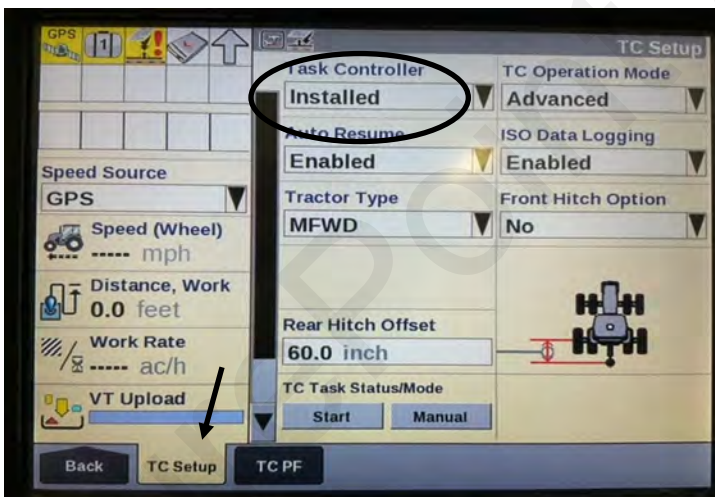
NOTE – This is a paid unlock to be supplied by CASE IH/ New Holland dealership.



STEP 14

Home Screen < Toolbox < TC

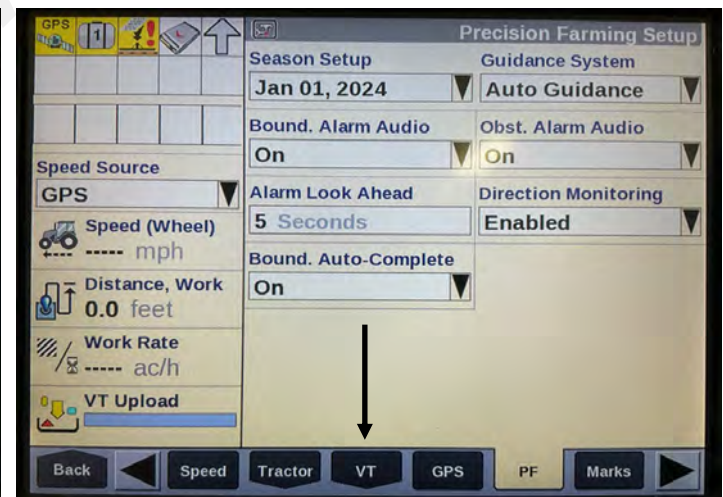
Use the arrows and select TC.



STEP 15

Select TC Setup.

If Task Controller is not “Installed”, press the soft key and select installed. This will require a display reboot. Select YES and allow the display to reboot. TC operation mode should be set to Advanced, Auto Resume set to Enabled, and ISO Data Logging set to Enabled. Set the correct Tractor Type, Front Hitch Option and Rear Hitch Offset to match your tractor.



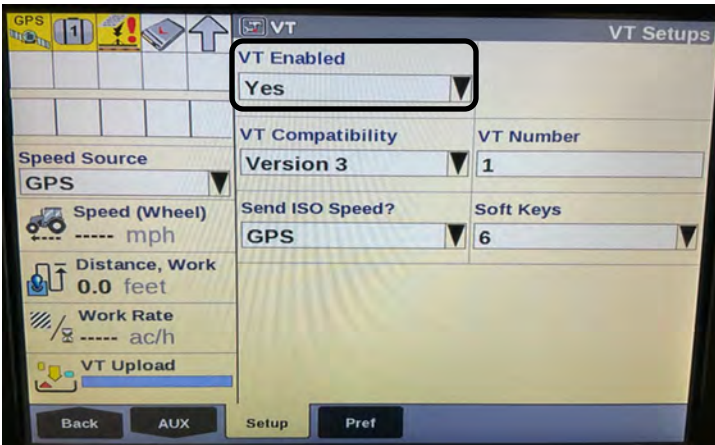
STEP 16

Home Screen < Toolbox < VT

Use the left/right arrows to scroll and select the VT soft key.

A

Software & Un-lock Activation



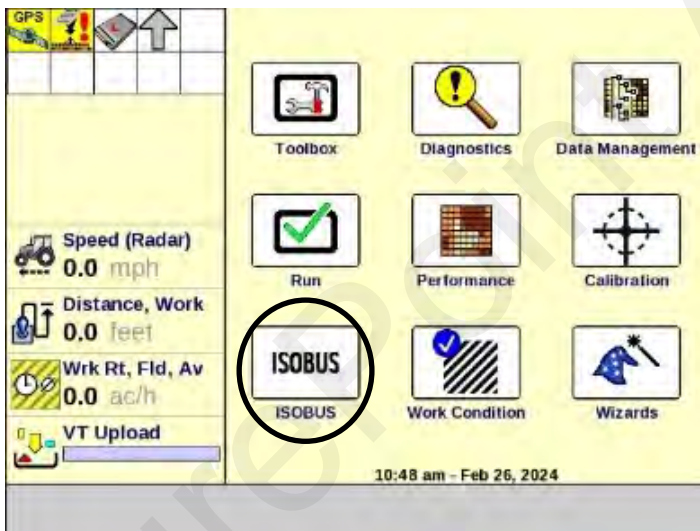
STEP 17

Press the **Setup** soft key *VT Enabled*, it should say Yes.
 If not, select Yes. The display will reboot.
 After rebooting, select **VT Compatibility** and set to Version 3, **VT Number** should be set to 1, choose the appropriate **Send ISO Speed** option, and **set Soft Keys to 6**.



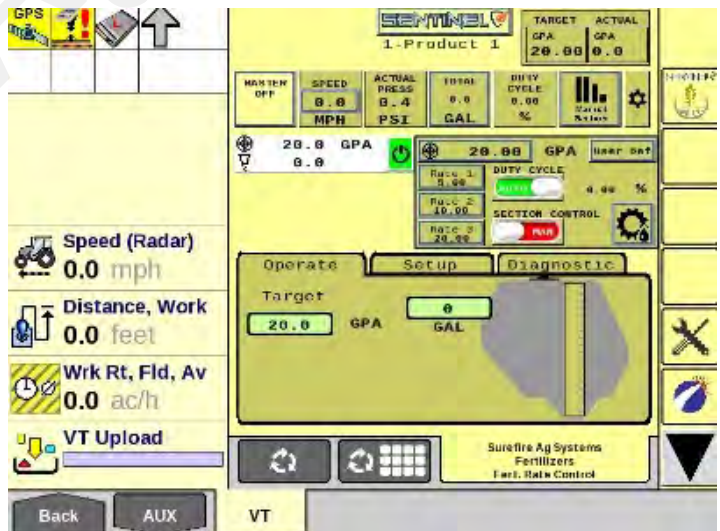
STEP 18

Select **Pref**
 Press the USA soft key.
 This will automatically set all display settings to USA standards of measurement. Set up Sentinel to a run screen.



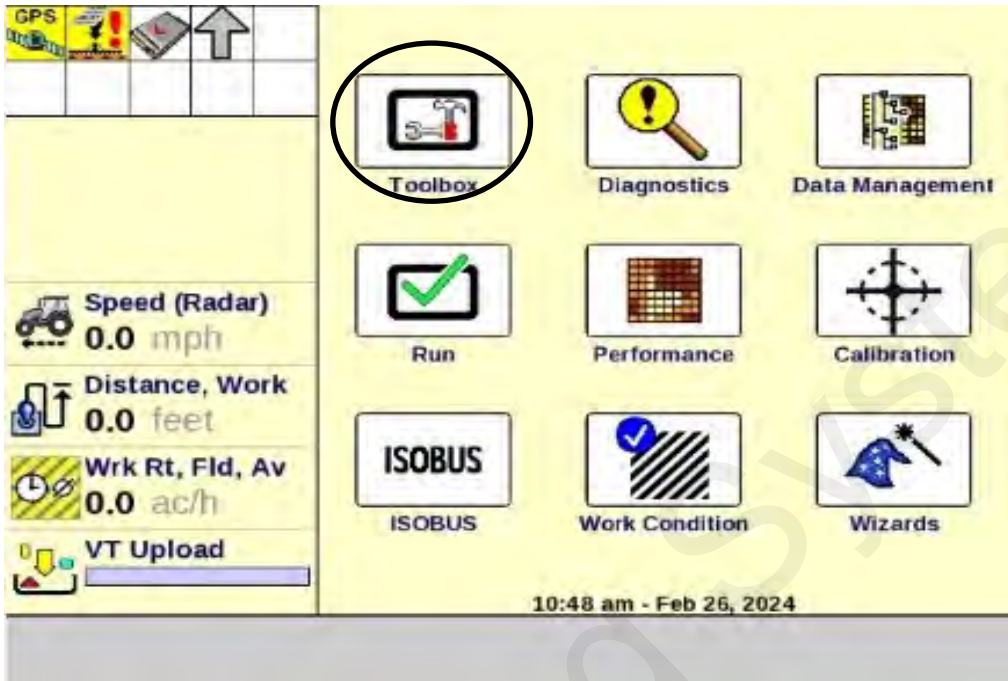
STEP 19

Pull up Sentinel on the home page > **ISOBUS**.



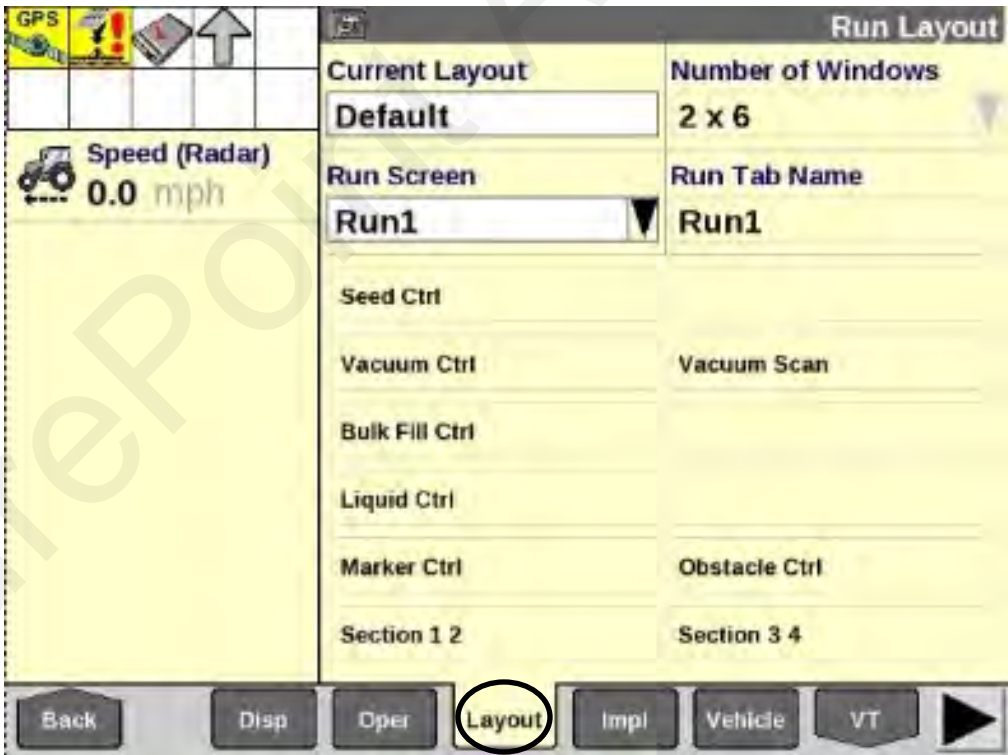
STEP 20

Your VT screen should look like this. Press back to go to the home screen.



STEP 1

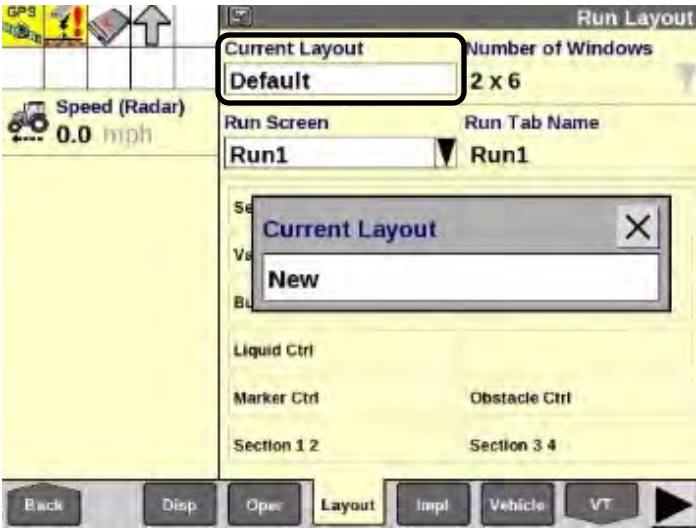
Press **Toolbox**.



STEP 2

Select **Layout** on the bottom toolbar.

B
PRO700
Setup



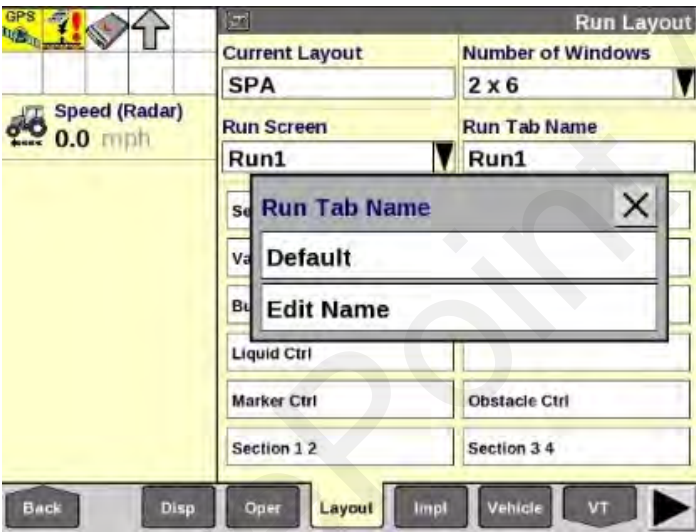
STEP 3

Press **Current Layout** and select New.



STEP 4

Name the **Layout** to be used and press Enter.
Example: SPA.



STEP 5

Select which Run Screen you want to add Sentinel to, then select Run Tab Name. **Edit Name**.

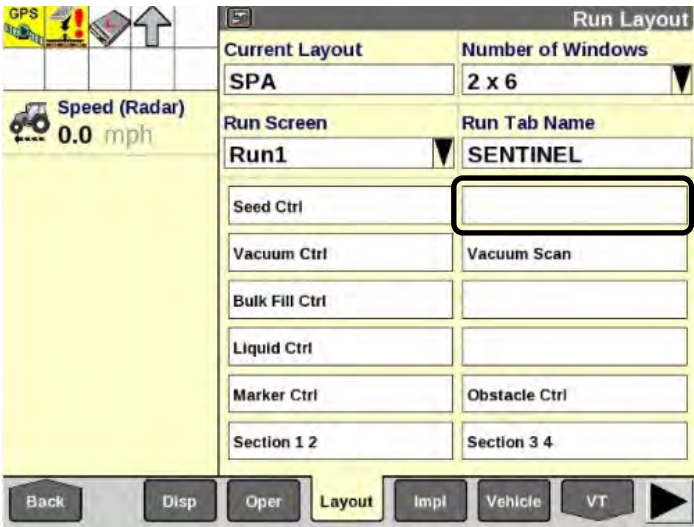


STEP 6

Type in Sentinel, or a name you'd prefer to use.

B

PRO700 Setup



STEP 7

Select a white box.



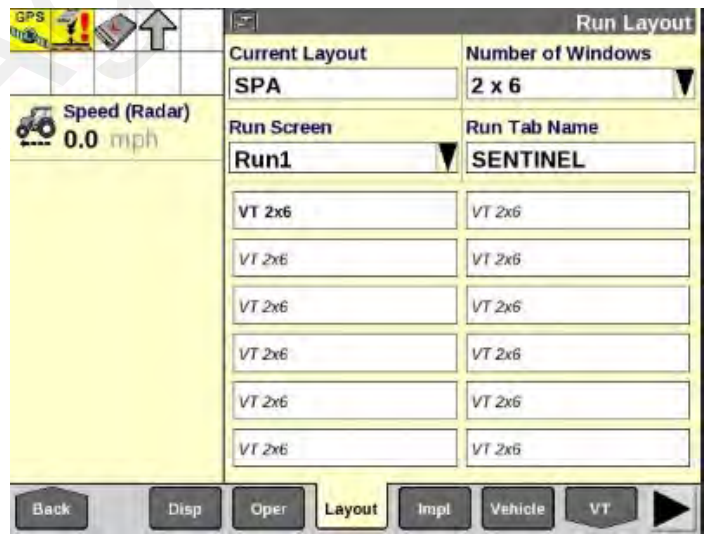
STEP 8

Use the up/down scroll arrows to find VT 2x6.



STEP 9

Press the VT 2x6 tab.



STEP 10

Your screen should look like this. Ensure it looks like this, then press **Back**.

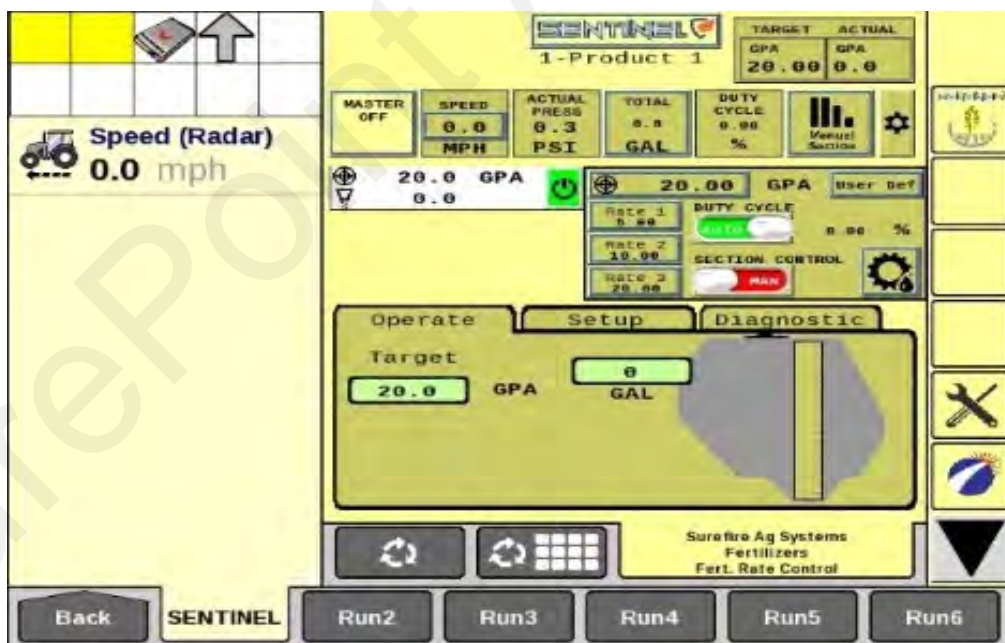
B

PRO700 Setup



STEP 11

Press the Run tab.



STEP 12

Sentinel is now listed on the Run Screen. NOTE: Sentinel can be put on any one of the six different Run Screens. Now Program the Sentinel using the **396-4035Y1** manual. Make sure Task Control in the Sentinel is turned on.

Perform this step before proceeding.

Set Up Sentinel Before Proceeding

See the [Sentinel Manual, 396-4035Y1](#), provided with your system for harness layouts, system setup, module addressing and more about operating the Sentinel Rate Control system.

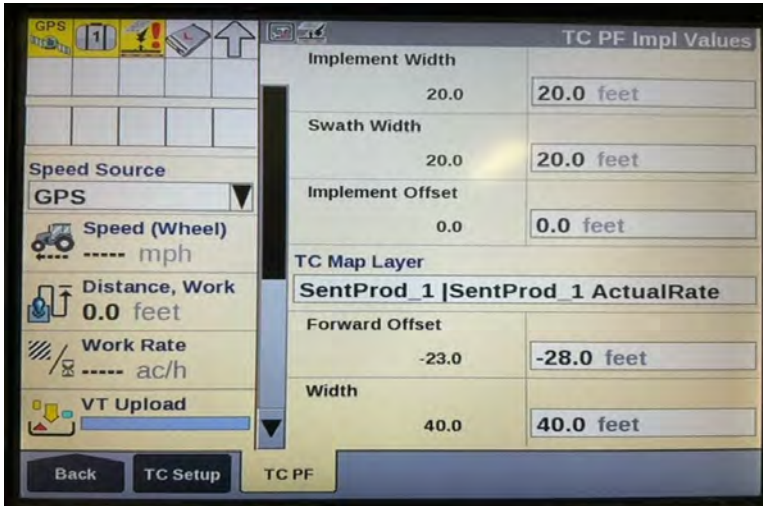
Scan or click the QR Code to go to the Sentinel Instructional Videos Playlist on YouTube.



Task Control Setup With PRO 700 Wizard

D

PRO 700
Wizard



STEP 1



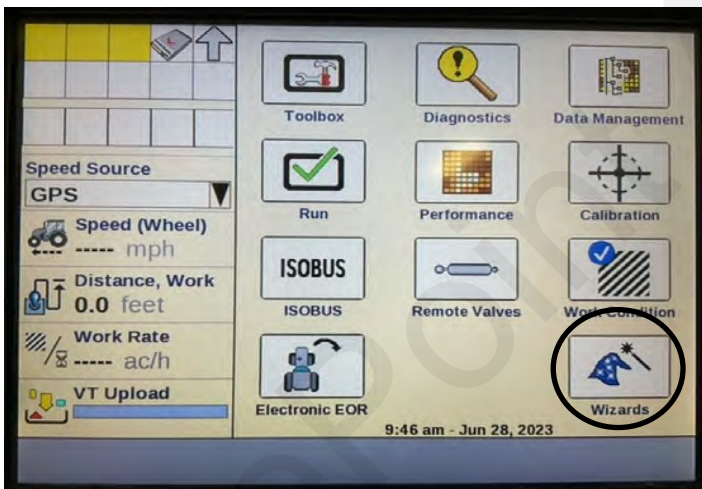
STEP 2

Select Toolbox < TC < TC PF

These dimensions will be pre-populated. Do not change without consulting a SurePoint Ag technician.

Press the TC Map Layer soft key.

In the TC Map Layer selection, choose SentProd_?|SentProd_1 ActualRate.



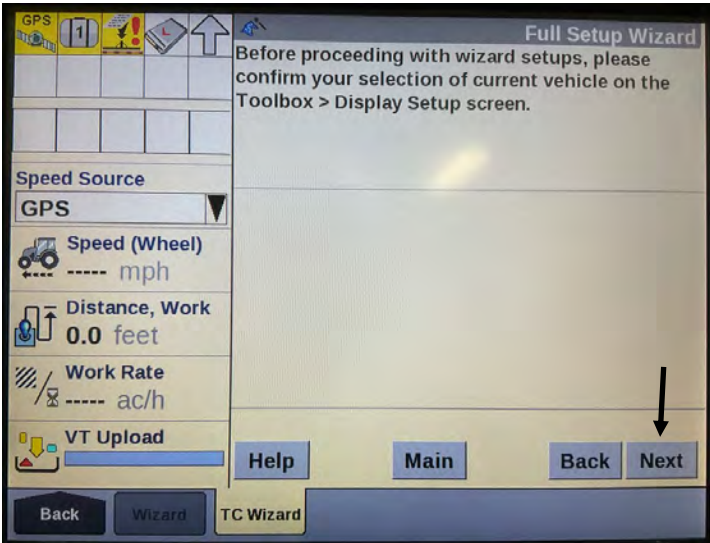
STEP 3

Back < Home Screen < Wizards



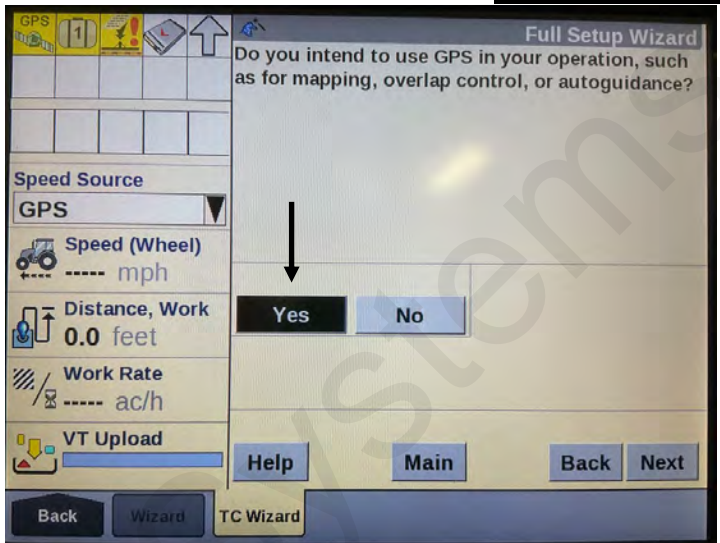
STEP 4

Using the TC Wizard tab, select Full Setup by pressing the soft key.



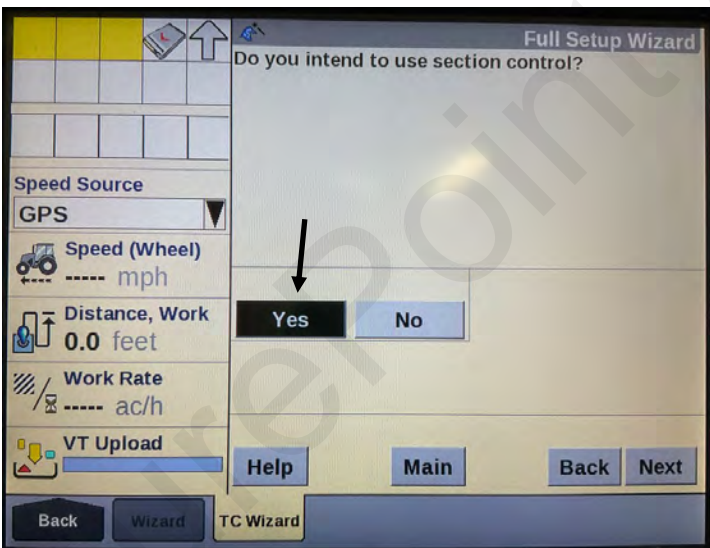
STEP 6

Read and follow the instructions and then press Next.



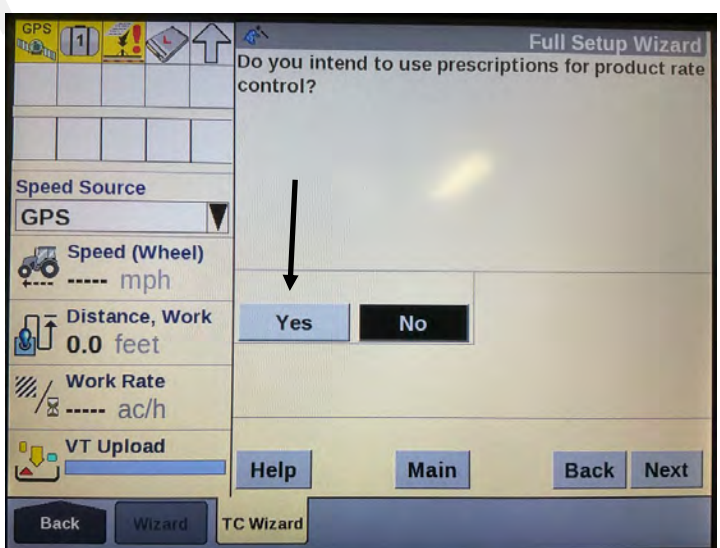
STEP 7

Select Yes, then press Next.



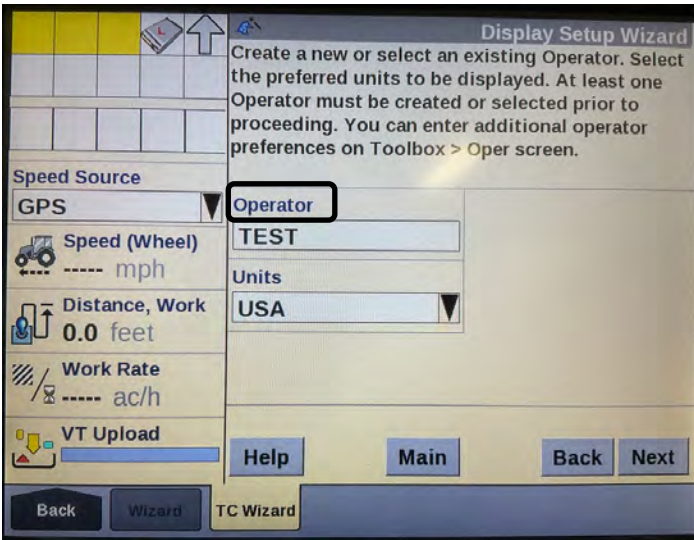
STEP 8

When using Section Control select Yes, then press Next.



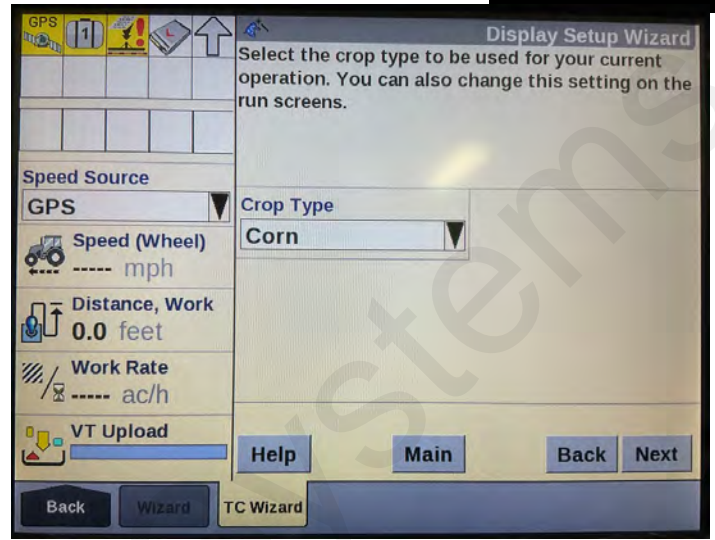
STEP 9

If prescriptions are going to be used, select Yes, then press Next.



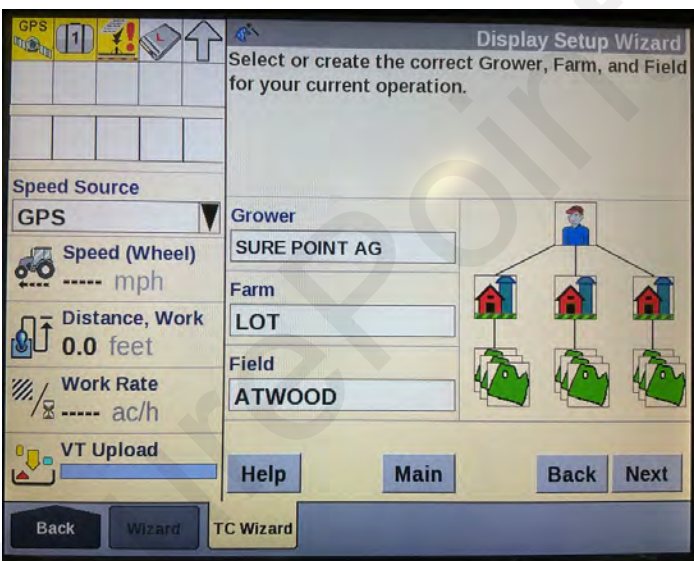
STEP 10

For data management, an Operator must be selected. You can create an operator by selecting Operator. Example: John Doe or TEST.
Press Next when this page is completed.



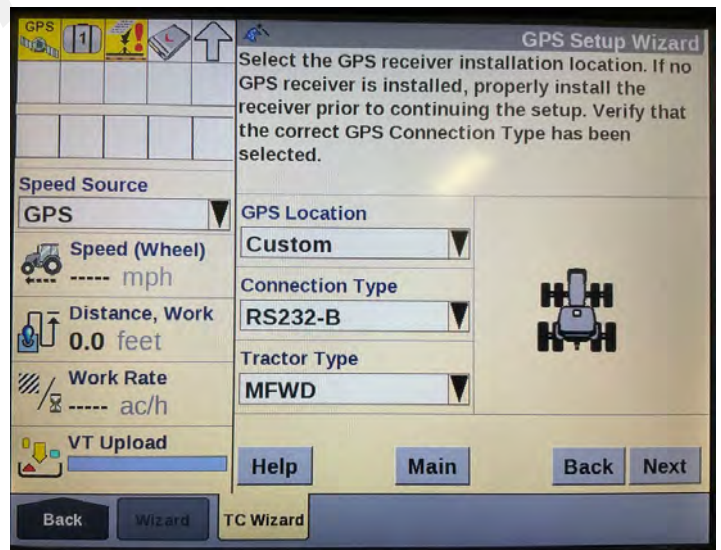
STEP 11

Crop Type must be selected for your current operation. Chose the crop type that you will be using from the selection menus. Example: Corn.
Press Next to proceed.



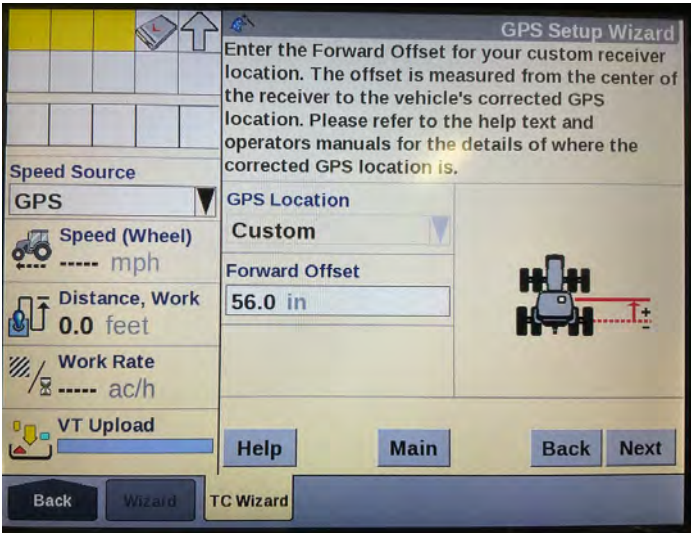
STEP 12

You will need to create your **Grower, Farm, and Field**. This needs to be filled out for data management, as well as your As Applied Mapping and functionality.
Press Next to proceed.



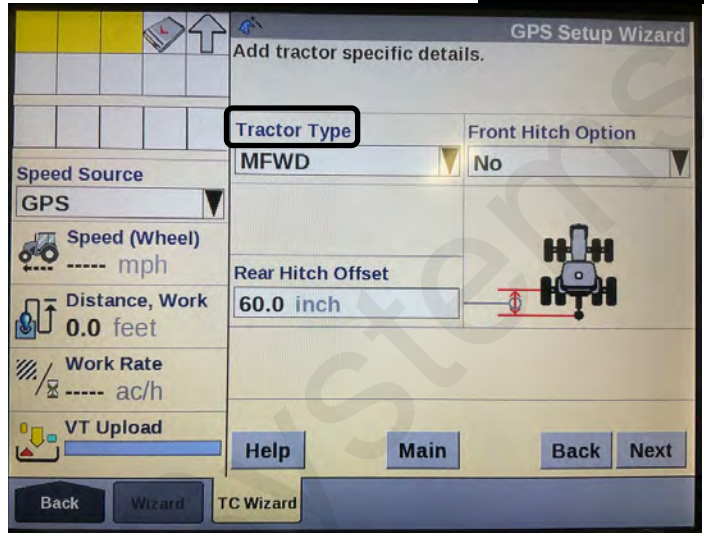
STEP 13

GPS information should populate from the GPS settings already installed from **Toolbox < GPS**. If these settings are not correct, fill in the proper information as related to your tractor.



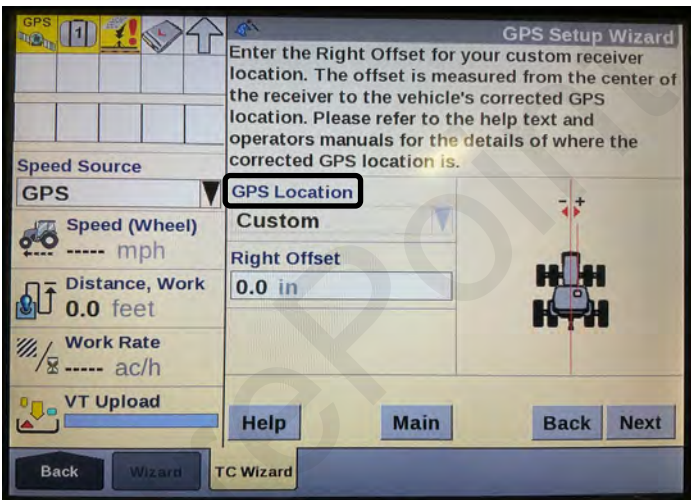
STEP 14

GPS Information should populate from the GPS settings already installed from **Toolbox < GPS**. If these settings are not correct, fill in the proper information as related to your tractor.



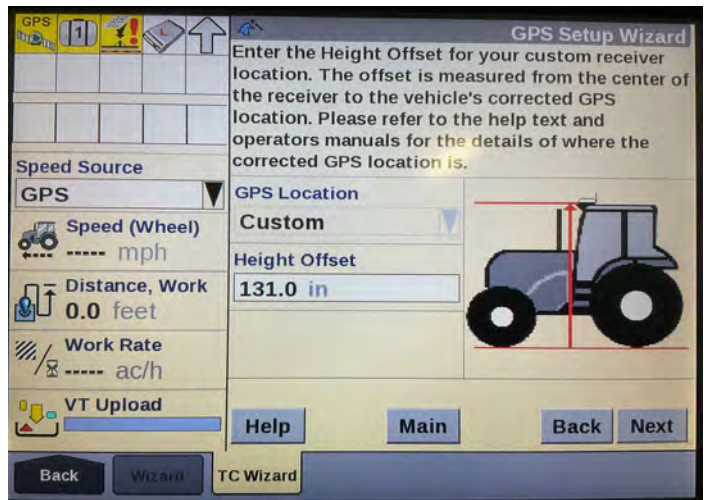
STEP 15

Select the correct Tractor Type for the tractor that you are using. You will need to use a tape measure to get the correct measurements for your tractor. Follow the instructions. Press Next to proceed.



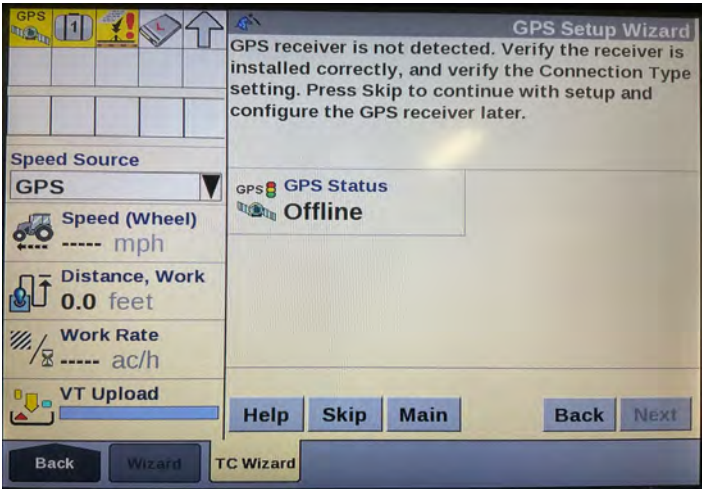
STEP 16

This setting is in relationship to where your GPS receiver is located on the tractor. Measure accurately with a tape measure. Press Next to proceed.



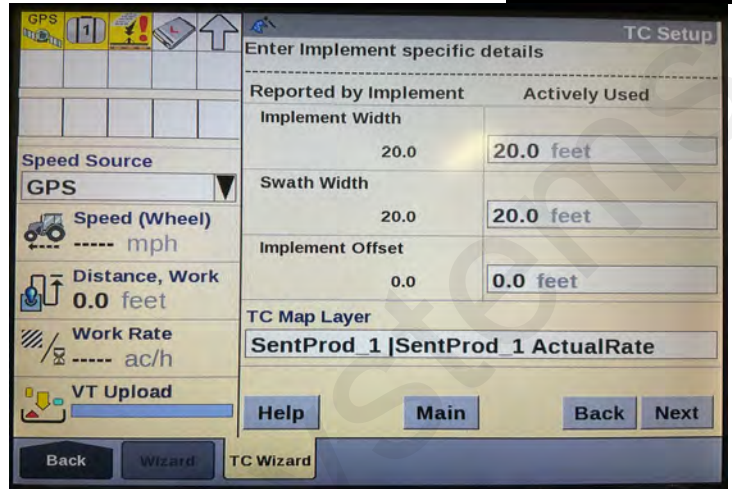
STEP 17

This information may be populated already. Check measurements with a tape measure for accuracy. Press Next to proceed.



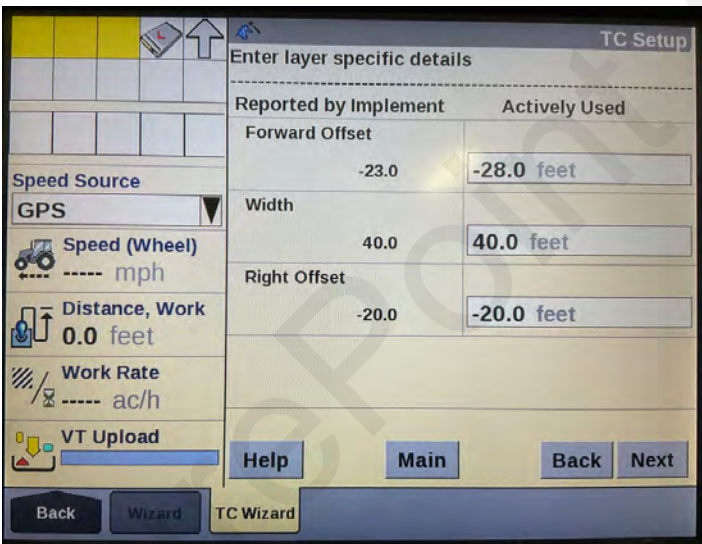
STEP 18

If your GPS receiver is functioning properly, the Status will indicate that. If GPS is offline, Press Skip to proceed.
If GPS Status is working correctly, press Next to proceed.



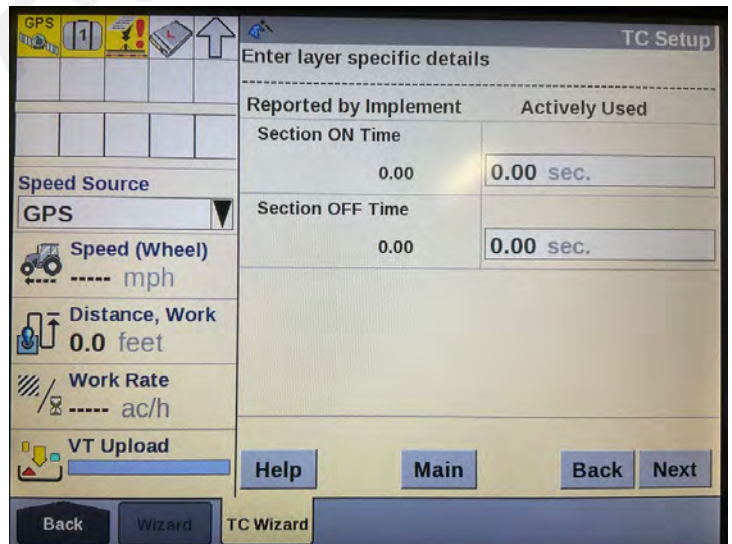
STEP 19

Confirm the Implement information has been pre-populated correctly for the implement that you will be using.
In the TC Map Layer section, press and select **SentProd_1 | SentProd_1 ActualRate**.
Press Next to proceed.



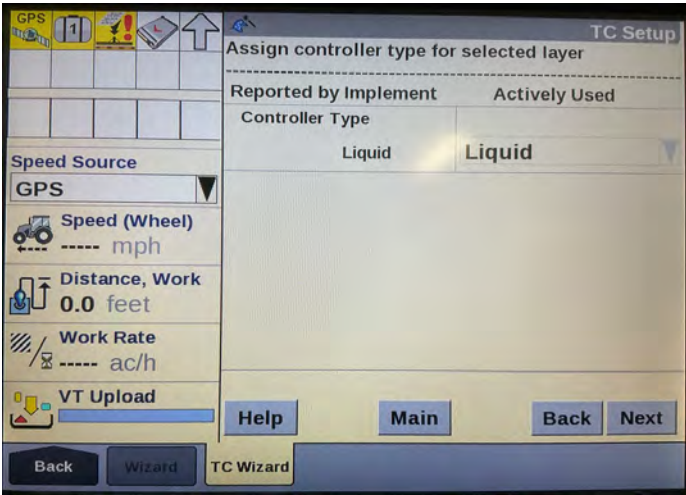
STEP 20

These dimensions will be pre-populated.
Press Next to proceed.



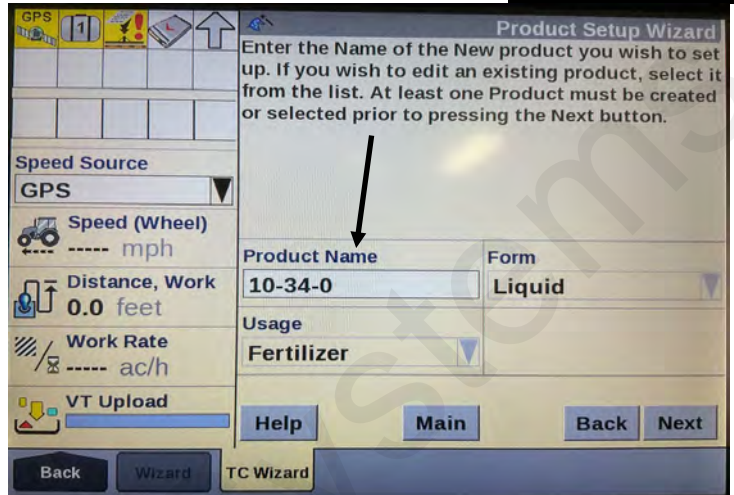
STEP 21

Refer to your CNH operator manual or press Help for further instructions.
Press Next to proceed.



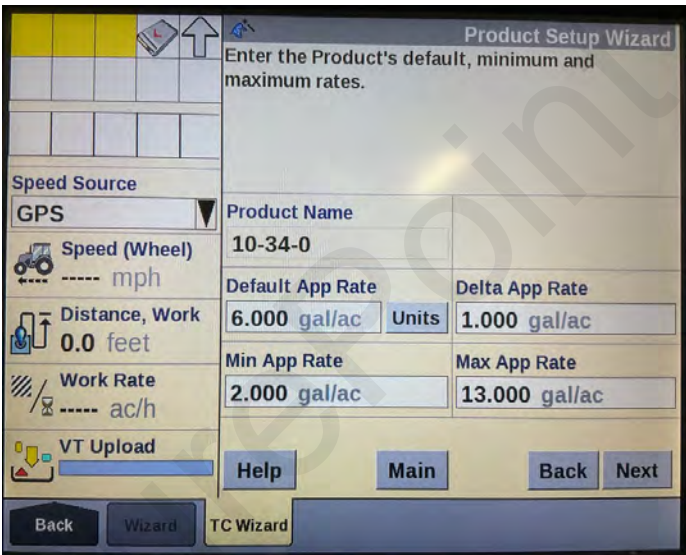
STEP 22

This screen confirms your Liquid Controller setup. Press Next to proceed.



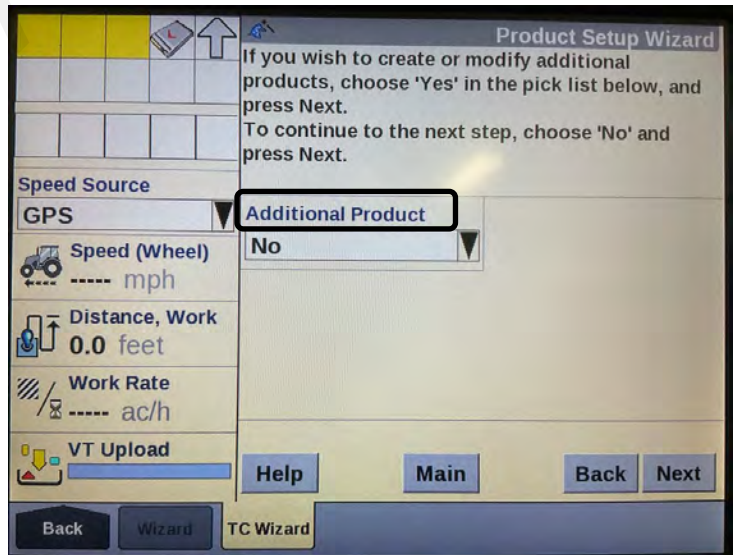
STEP 23

A product will need to be selected or created for mapping information. Under **Product Name**, select or create a new product. If a new product is selected, fill out Form and Usage for that product. Press Next to proceed.



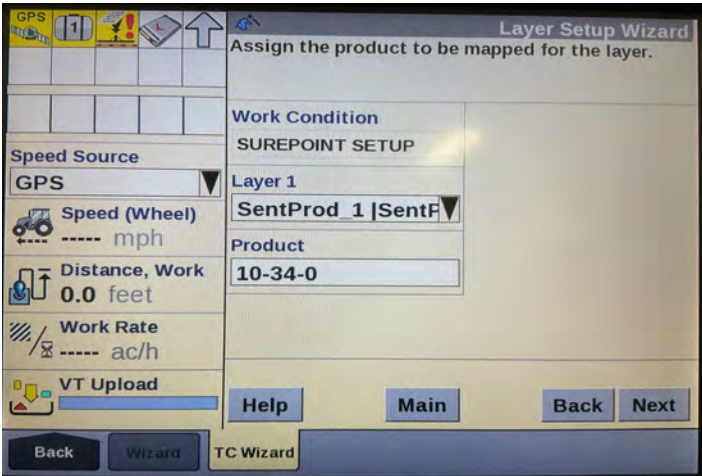
STEP 24

Fill out the desired **application rates** for the product that you will be using. Press Next to proceed.

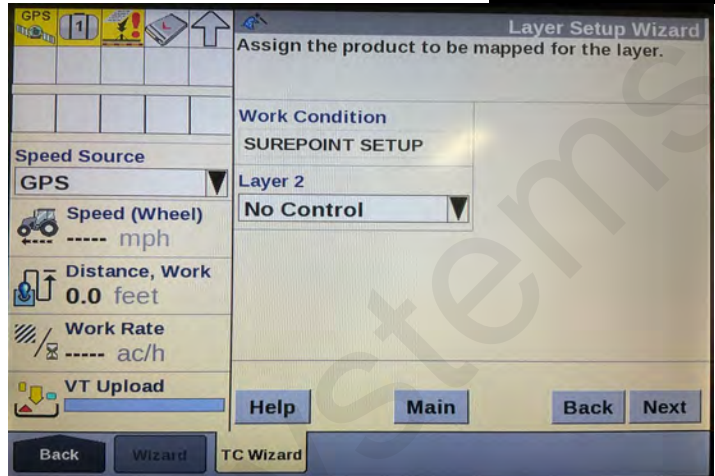


STEP 25

If your Sentinel will be controlling additional products, select Yes and complete information for each product that it will be controlling. Sentinel can control up to four products. For this example, we are using one product. Press Next to proceed.



STEP 26

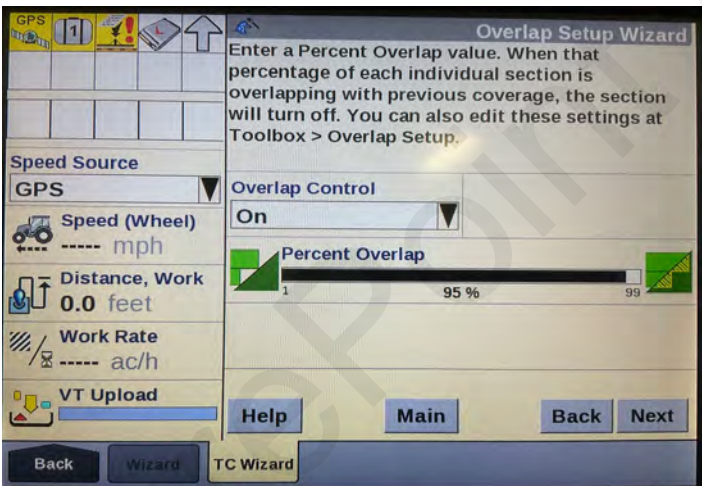


STEP 27

Depending on your setup, there may be multiple layer and product assignments. **Confirm layer and product assignments for your application needs.**

For our example, we are using one product. Press Next to proceed.

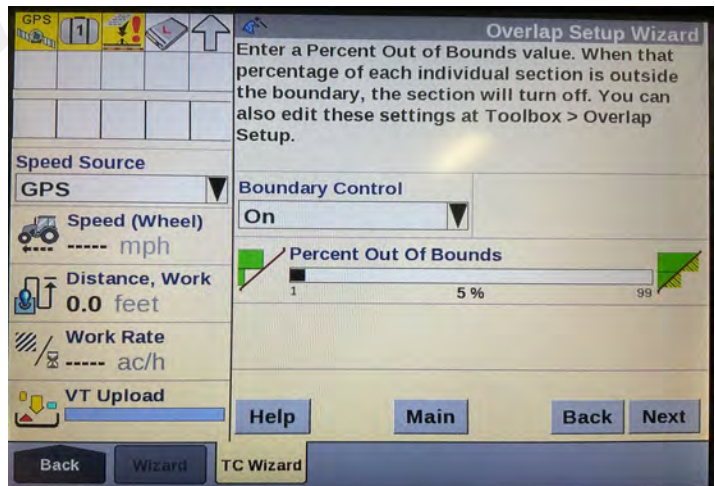
In our example, we are using one product: Layer 2. Select No Control. Press Next to proceed.



STEP 28

Overlap is set for Section Control. This needs to be On if Section Control is being used. The Percent of Overlap is user-defined. A typical setting is 95%. Press Help or refer to your owner's manual for further setup instructions.

Press Next to proceed.

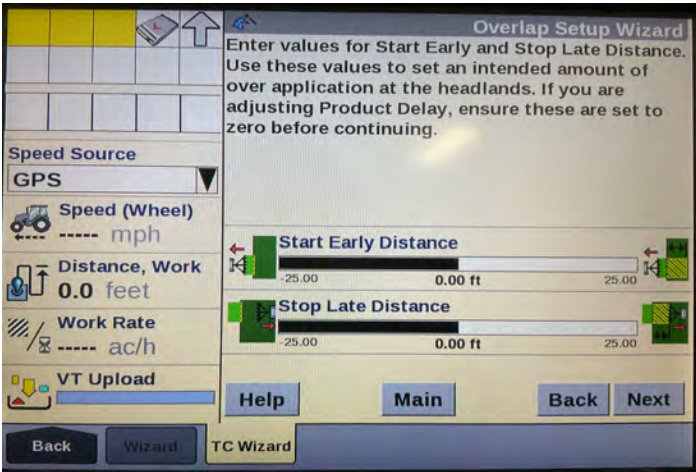


STEP 29

Boundary Control will need to be On for Section Control to operate when boundaries are being used. Percent Out Of Bounds is user-defined. A typical setting is 5%. Refer to your operator's manual or press the Help tab for further information. Press Next to proceed.

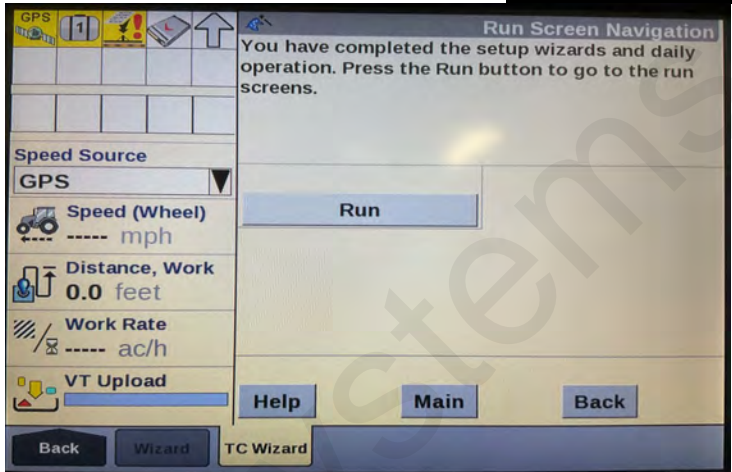
D

PRO 700 Wizard



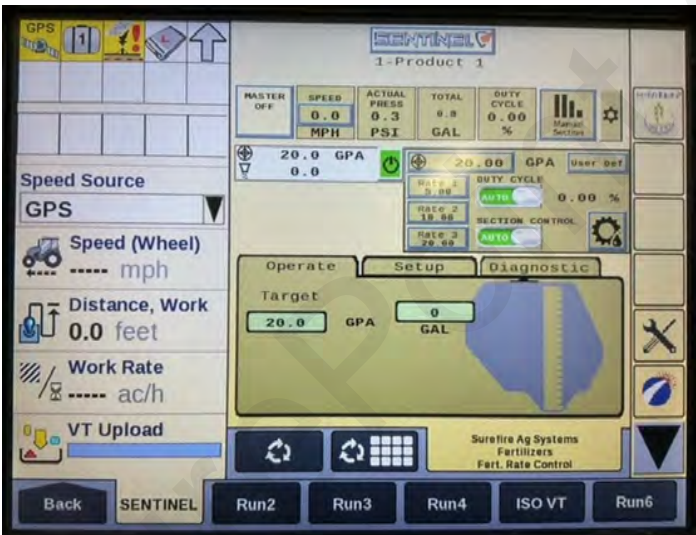
STEP 30

Start Early and Stop Late Distance is user-defined. Refer to operator's manual for proper setup. These values can be adjusted at a later time.
Home Screen < Toolbox < Overlap
 Press Next to proceed.



STEP 31

This concludes the Wizard Setup. Press Run to proceed, Back to edit any setup tab, and Main to start all over or review.



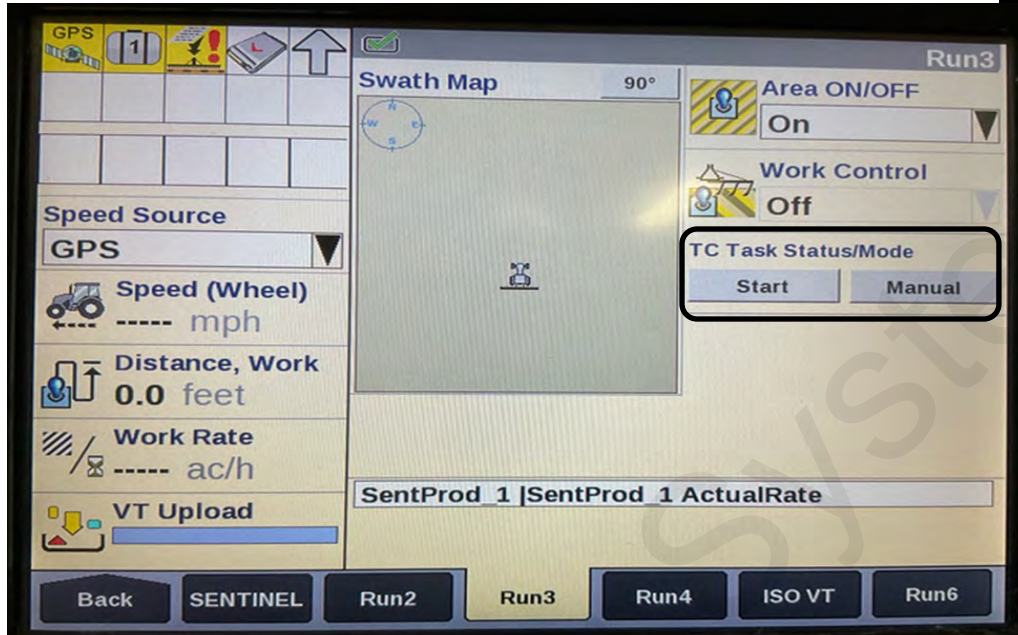
STEP 32

Home Screen < Run
 The Run Screen 1 has now been setup to view the Sentinel Controller and is named Sentinel.



STEP 33

Home Screen < Toolbox < Layout
 Find a Run Screen that will be user-friendly. Select a blank, white box. In the menu, select TC Task Status/Mode. Also, find two blank, white boxes and select TC Section Status Bar. This selection will take up two boxes.
 Example: Run Screen 3



STEP 34

Home Screen < Run

Select **SentProd_1/SentProd_1ActualRate**. This will allow you to monitor section control.

TC Task Status/Mode. This will need to be started each time you start a field. This allows mapping and auto-section control.



STEP 35

Home Screen < Run

Setup your Sentinel controller per your application needs.

SurePoint manual 396-4035Y1.

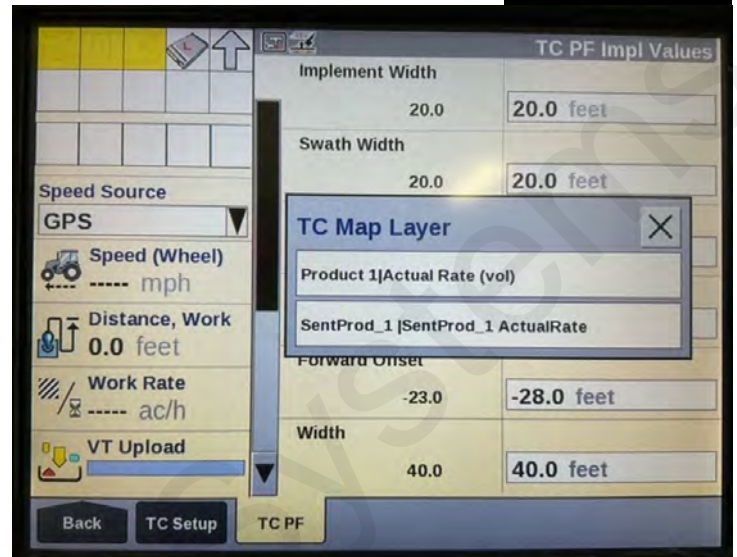
Task Control Setup

E

Product and
Manual Task
Control



STEP 1

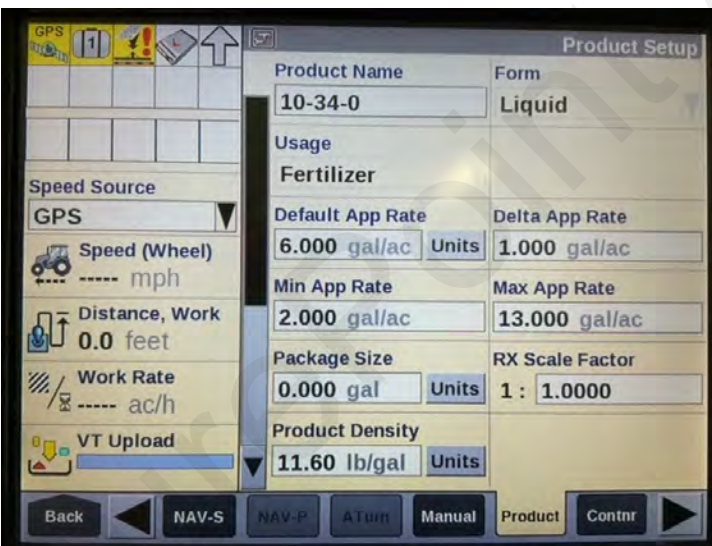


STEP 2

Select Toolbox < TC < TC PF

All settings should populate correctly after Sentinel is setup and Task Control on Sentinel is turned on. **Do not** change any settings.

Press the **TC Map Layer** soft key. In the TC Map Layer selection, choose **SentProd_?|SentProd_1 ActualRate**.



STEP 3

Home Screen < Toolbox < Product

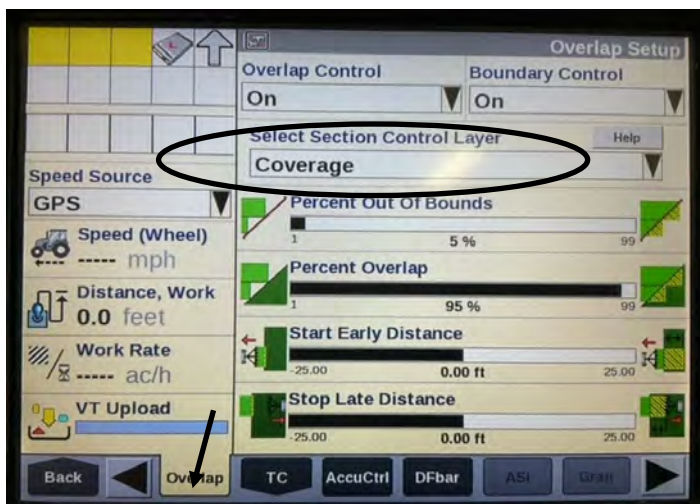
Setup a product that you will be using for your application system. In this example, we are using 10-34-0 Fertilizer.



STEP 4

Home Screen < Toolbox < Contnr

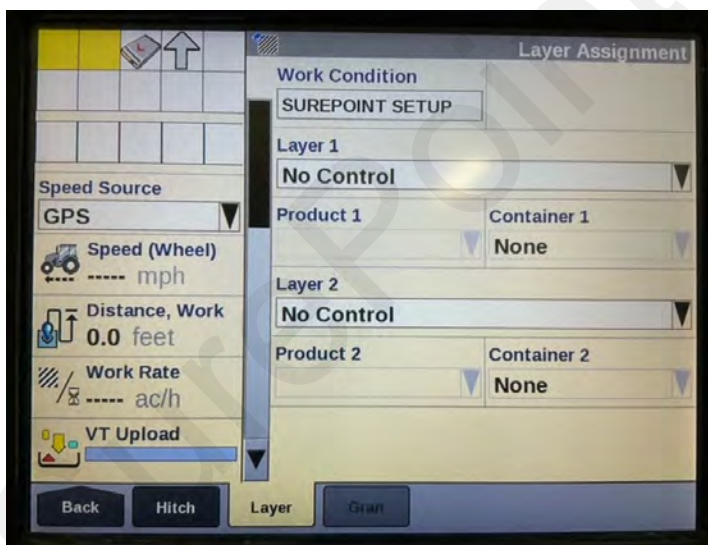
This is an optional setup. If you want to track your tank volume and usage, this can be setup to do so. This will be used in a later setting (Work Condition).

**STEP 5****Home Screen < Toolbox < Overlap**

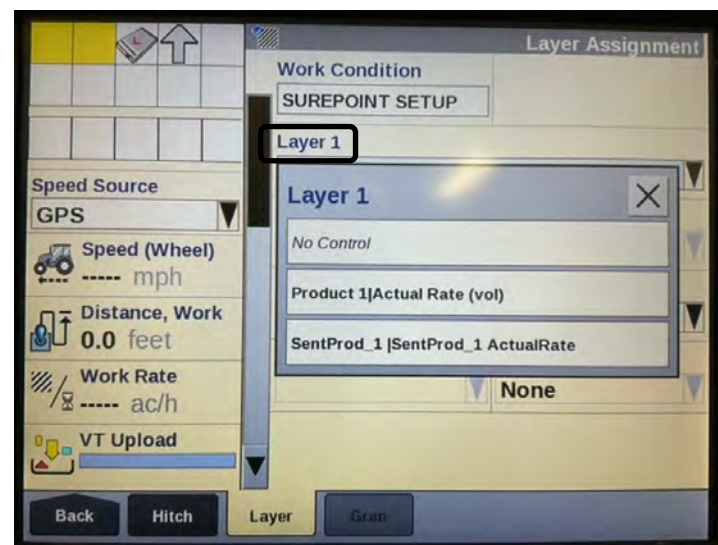
Overlap Control and Boundary Control will need to be turned on if using Section Control. Percent Out of Bounds, Percent Overlap, Start Early Distance and Stop Late Distance will need to be setup for your application needs. The above settings are starting points only. Select Section Control Layer.

**STEP 6****Select SentProd_1 \SentProd_1 ActualRate**

This will allow as-applied mapping for Sentinel products and will be show on coverage mapping screens.

**STEP 7****Home Screen < Work Condition < Layer**

Create a Work Condition name for your application needs. Example: SurePoint Setup. Select a Layer to setup for Sentinel.

**STEP 8****Layer Assignment 1**

Select SentProd_1 \SentProd_1 ActualRate Set all Layer Assignments not being used to **No Control**.

E

Product and Manual Task Control



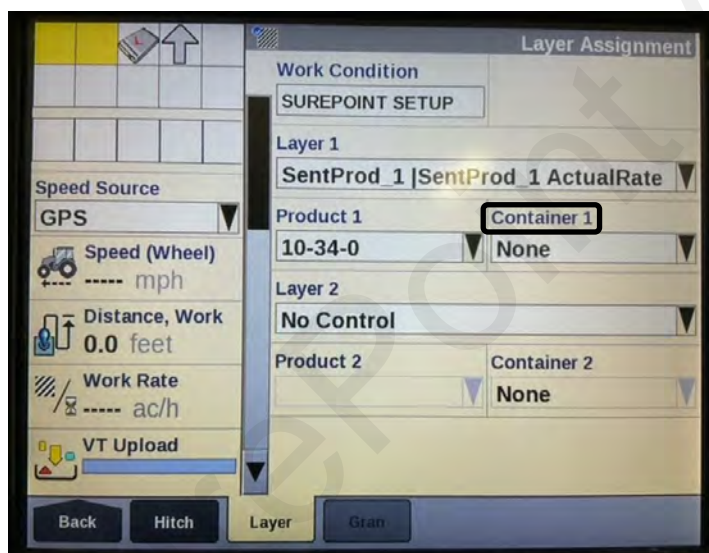
STEP 9

Press Product 1 soft key.



STEP 10

Select the 10-34-0 product.
Example only: Select the chemical that you will be applying.



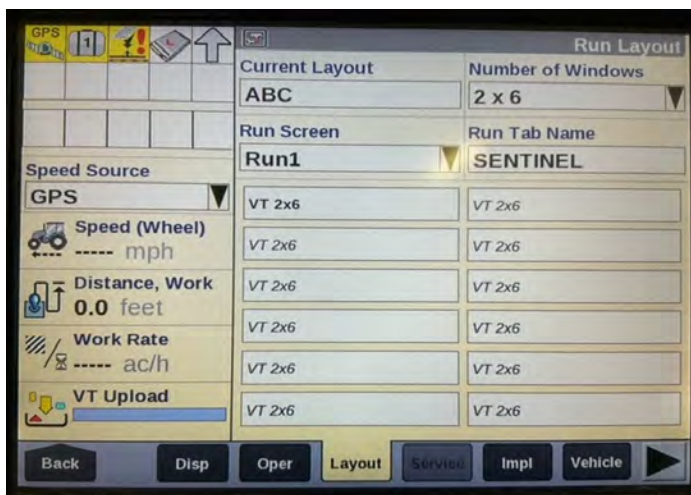
STEP 11

Optional setting.
Press the Container 1 soft key.



STEP 12

Select the **TANK** option.



STEP 13

Optional setting—Install Sentinel ISO on a Run Screen.

Home Screen < Toolbox < Layout

Current Layout setting can be named for your operation. These settings will be saved for this particular setup. Example: ABC.

Select a user defined Run Screen. Example: Run Screen 1.

Select a blank, white box under Run Screen. Scroll through the menu, select VT 2X6.

Name the Run Tab Name.

Example: Sentinel.



STEP 14

Home Screen < Run

The Run Screen 1 has now been setup to view the Sentinel Controller and is named “Sentinel.” If Sentinel is not being displayed refer back to your Sentinel 396-4035Y1 manual to make certain your harnesses are all connected properly.



STEP 15

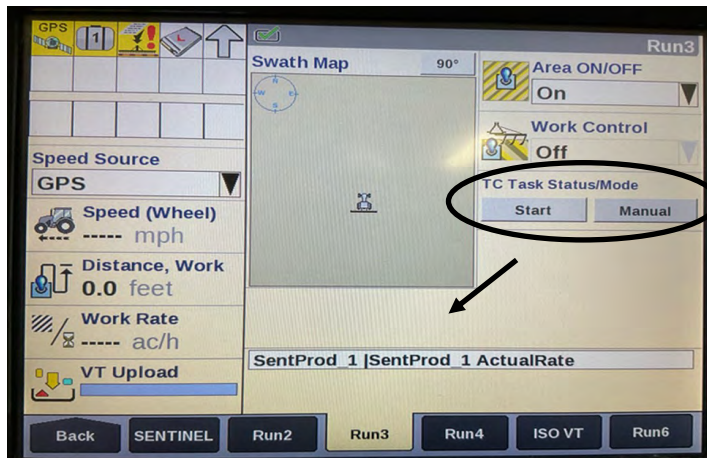
Home Screen < Toolbox < Layout

Find a Run Screen that will be user friendly.

Select a blank, white box.

In the menu, select TC Task Status/Mode.

Also, find two blank, white boxes and select TC Section Status Bar: This selection will take up two boxes Example: Run Screen 3.



STEP 16

Home Screen < Run

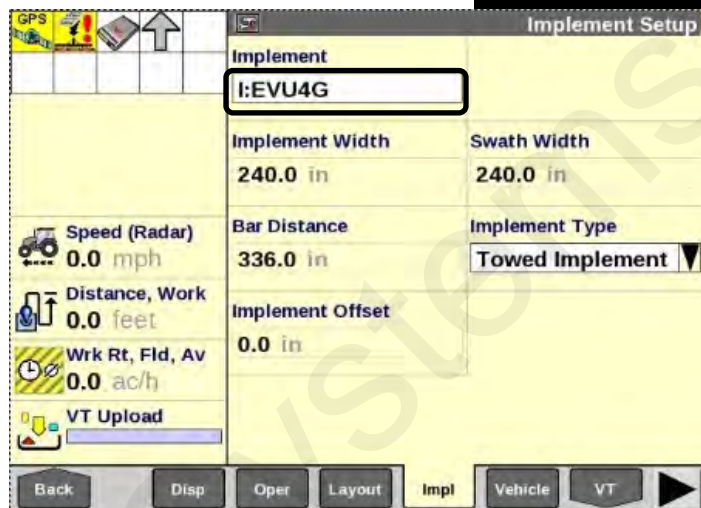
Select SentProd_1/SentProd_1ActualRate

This will allow you to monitor section control

TC Task Status/Mode. This will need to be started each time you start a field. This allows mapping and auto-section control.



STEP 17



STEP 18

Don't forget to setup your **Grower < Farm < Field** information and select the Work Condition that was just named and setup. This information can be added to a run screen.
Option: Toolbox > Impl.

Change the implement name.



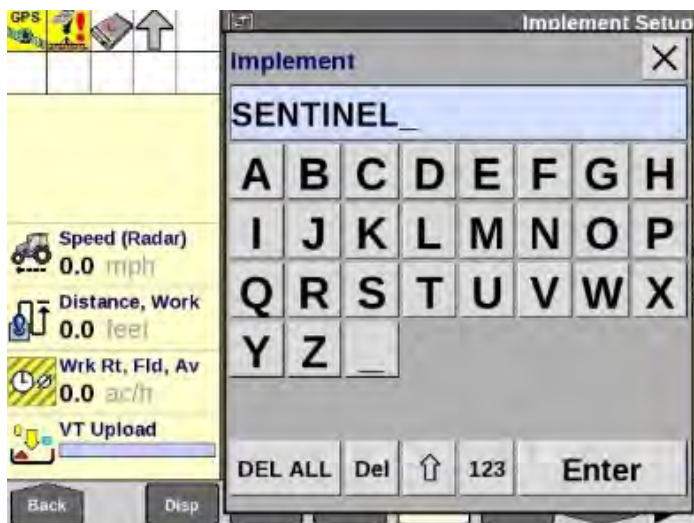
STEP 19



STEP 20

Press Edit Name.

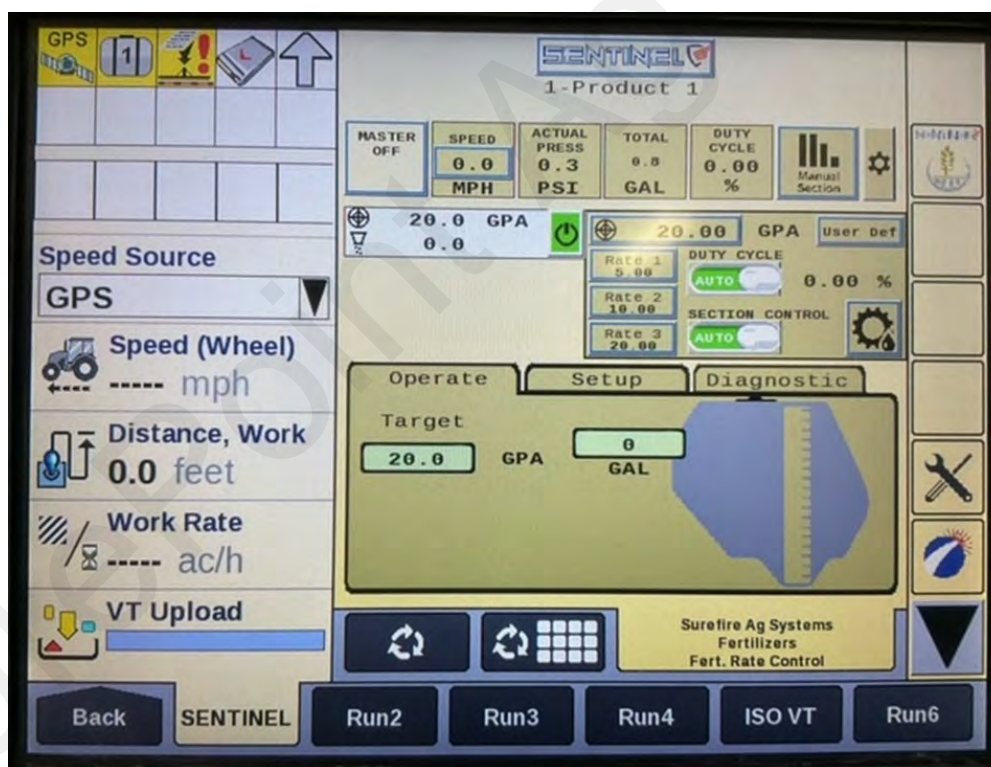
Press DEL ALL, then name the implement.
Example: SENTINEL.

**STEP 21**

Once you have your implement named, press **Enter**.

**STEP 22**

Your implement is now named.

**STEP 23**

Home Screen < Run

Now, everything is set up and ready to go.