

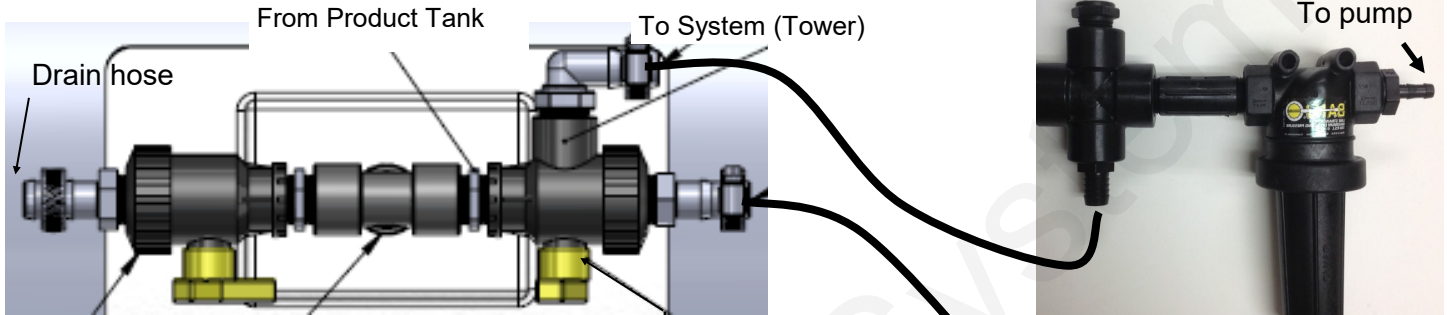
396-3075Y1 QuickStart Card



SureFire Catalyst™ Electric Pump System for John Deere GRC

For screenshots and more complete system information and explanation, see the full manual for this system.

Plumbing detail shown below: Picture on left shows plumbing on bottom of product tank.



Drain Valve to drain tank— 1/4 turn valve to open or close drain

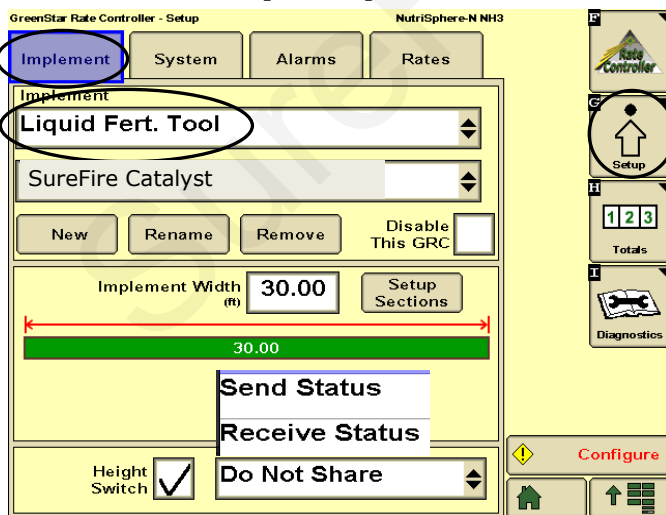
3/4" TEE out of bottom of the Product Tank

Valve to select Product or Rinse The long end of the handle points toward the source— product tank or rinse tank. Rotate valve 1/2 turn to change from tank to rinse. Rotate valve 1/4 turn to close flow from both the product tank and the rinse tank.

Hose from rinse tank—Use the rinse tank to rinse the system when it will not be used for a few days.

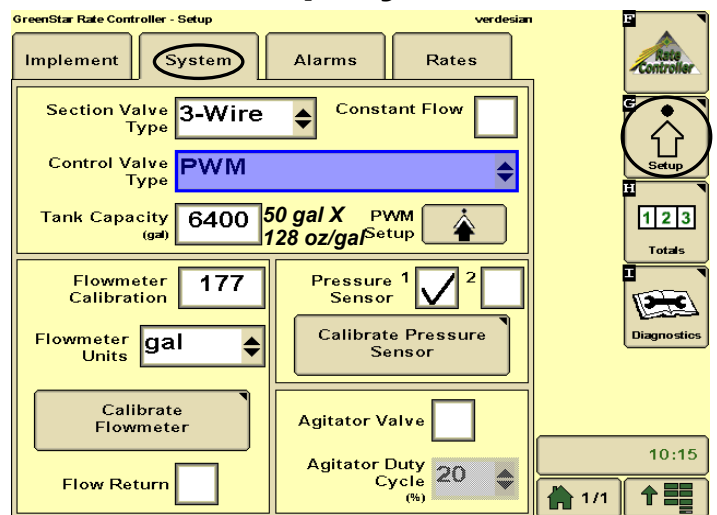
Note: The flowmeter will be set to measure ounces. All screens that say gallons or gal/acre will actually be showing ounces, not gallons. The following screenshots show the setup settings that are typically good settings to begin with. Actual settings on your system may vary from those shown here. Adjust settings as necessary in the field to get the best operation from your system.

Setup-Implement



Set up Height Switch as appropriate for this system

Setup-System



Flowmeter Cal—177

Flowmeter Units—gal

(This will actually measure ounces for 32 oz/ac rate)



PWM Setup

Change first digit of Control Valve Calibration to speed up or slow down control changes.

Calibrate Pressure Sensor

Setup - Alarms

Low Tank Level can be set if desired. Tank level will be measured in ounces, not gallons.

Setup - Rates

Diagnostics-Tests-Section Test

Section Test can be used for manual operation of the system. It can be used to prime the pump on startup or to rinse the system. It is good for troubleshooting.

Diagnostics-Tests-Nozzle Flow Check

Use Nozzle Flow Check to see if system will lock on to a rate at a test speed. Pressure with water will be a lot lower than it will be with a heavier, thicker product.

Diagnostics—Readings—Delivery System will show details on flowmeter operation and pump speed (PWM Duty Cycle). This can be useful information for troubleshooting.

Most applications at 32 oz/ac and 30" rows will use the Purple tube.

For cold weather and/or high speed application, if the pressure generally runs over 40-45 PSI in the purple tube, consider switching to the Blue tube.