



396-001620

Z-Mount Tank Bracket Installation Instructions

Kit Number: 526-01-100100

Kit Description: Z-Mount Tank Mounting Kit (Fits 4"W x 5"H bars)

Kit Number: 526-01-100200

Kit Description: Z-Mount Tank Mounting Kit (Fits 4"W x 6"H bars)

Kit Number: 526-01-100300

Kit Description: Z-Mount Tank Mounting Kit (Fits 5" to 7" W bars)



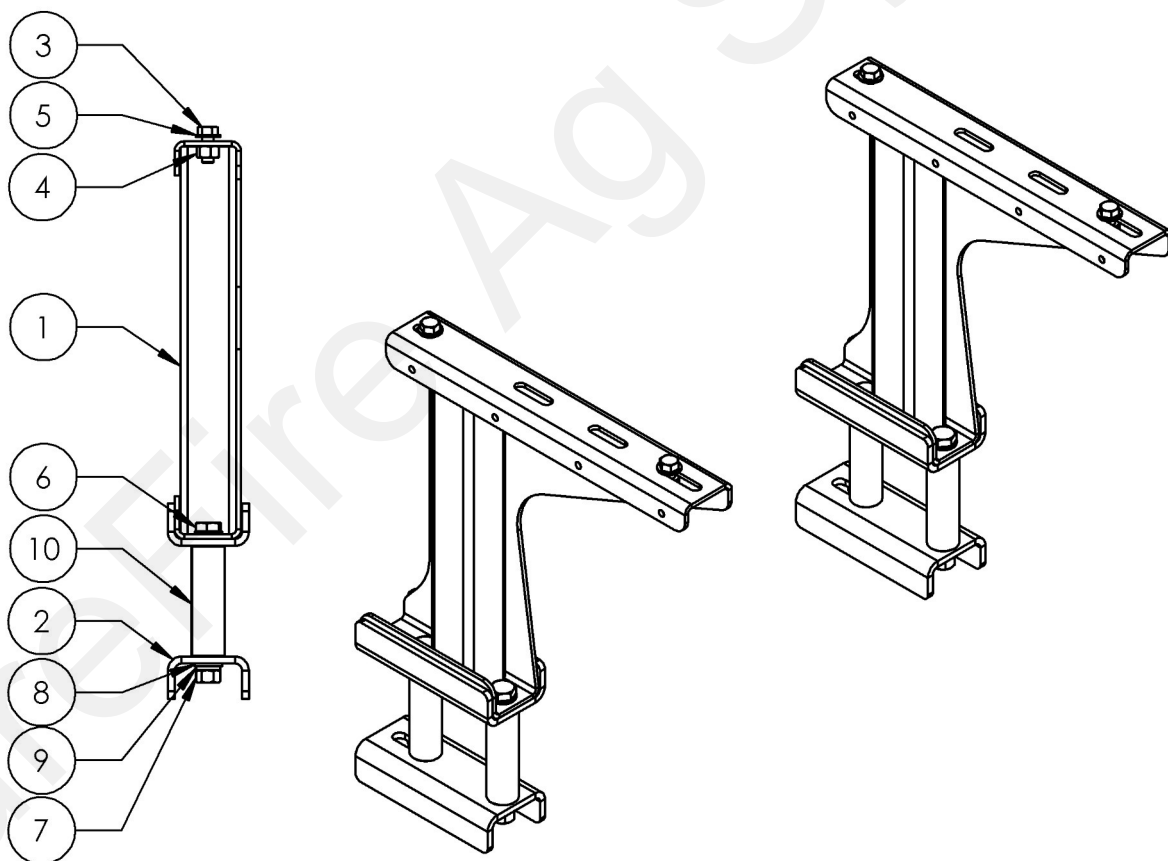


Parts List and Exploded View

Kits: 526-01-100100 and 526-01-100200

ITEM NO.	PART NUMBER	DESCRIPTION	QTY.
1	400-2019A1-BK	Z-Mount Tank Mounting Bracket	2
2	400-2015A1-BK	Z-Mount Tank Mount Backer Plate	2
3	300-100200-5	5/8" x 2" Hex Head Bolt - G5	4
4	323-10	5/8" Flange Nut	4
5	330-10	5/8" Flat Washer	4
6	300-120800-8	3/4" x 8" Hex Head Bolt - G8	4
7	320-12-8	3/4" Nut - G8	4
8	330-12-8	3/4" Flat Washer - G8	8
9	331-12-8	3/4" Lock Washer - G8	4
10 ¹	400-3191Y1	1-3/4"OD x 5" Spacer Bushing for 4" Toolbar	4
10 ²	400-3192Y1	1-3/4"OD x 6" Spacer Bushing for 4" Toolbar	4

1. Spacer bushing provided with Kit #: 526-01-100100, (Fits 4"W x 5"H bars)
2. Spacer bushing provided with Kit #: 526-01-100200, (Fits 4"W x 6"H bars)

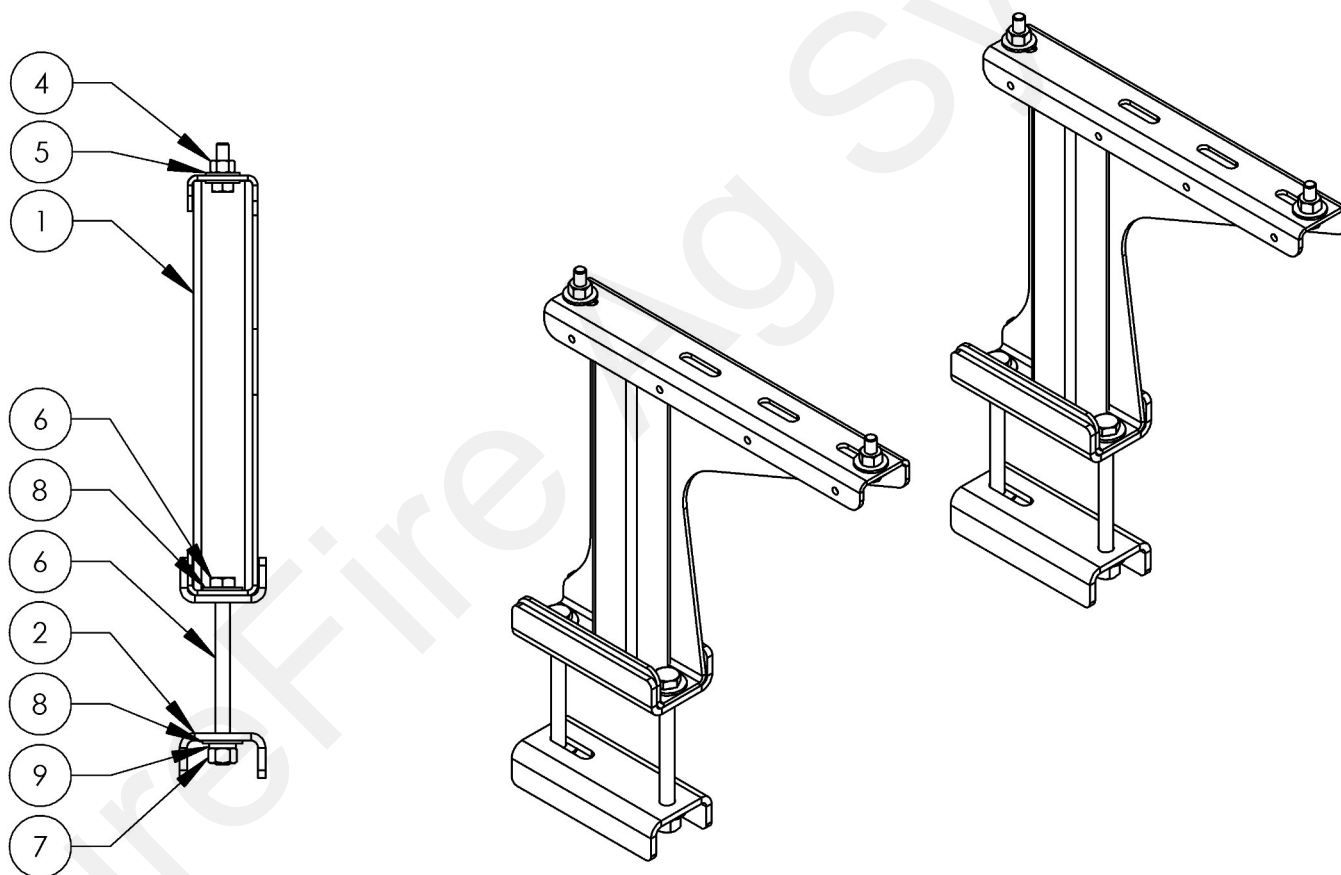


SureFire Accelerator (55, 110 and 155 gallon) or Catalyst™ (55 and 100 Gallon) tanks can be mounted above and offset from a toolbar using this z-mount bracket. The kits with spacer bushings are for toolbars that are 4" wide. The kit includes 3/4" x 8" bolts to work with a 5-6" tall bar with the use of a 5" or 6" tall spacer bushing.



Parts List and Exploded View Kit: 526-01-100300

ITEM NO.	PART NUMBER	DESCRIPTION	QTY.
1	400-2019A1-BK	Z-Mount Tank Mounting Bracket	2
2	400-2015A1-BK	Z-Mount Tank Mount Backer Plate	2
3	300-100200-5	5/8" x 2" Hex Head Bolt - G5	4
4	323-10	5/8" Flange Nut	4
5	330-10	5/8" Flat Washer	4
6	300-120900-8	3/4" x 9" Hex Head Bolt - G8	4
7	320-12-8	3/4" Nut - G8	4
8	330-12-8	3/4" Flat Washer - G8	8
9	331-12-8	3/4" Lock Washer - G8	4



SureFire Accelerator (55, 110 and 155 gallon) or Catalyst™ (55 and 100 Gallon) tanks can be mounted above and offset from a toolbar using this z-mount bracket. This kit attaches to 5" - 7" wide toolbars. The kit includes 3/4" x 9" bolts to work with a 7" tall bar.

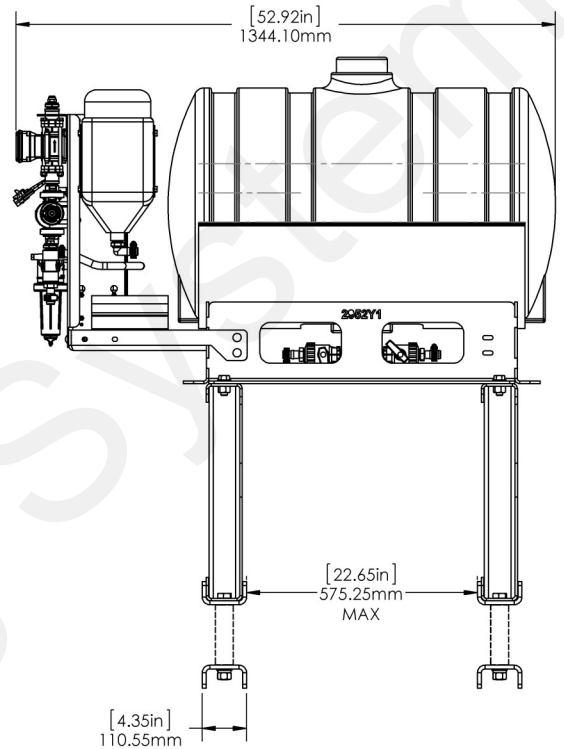
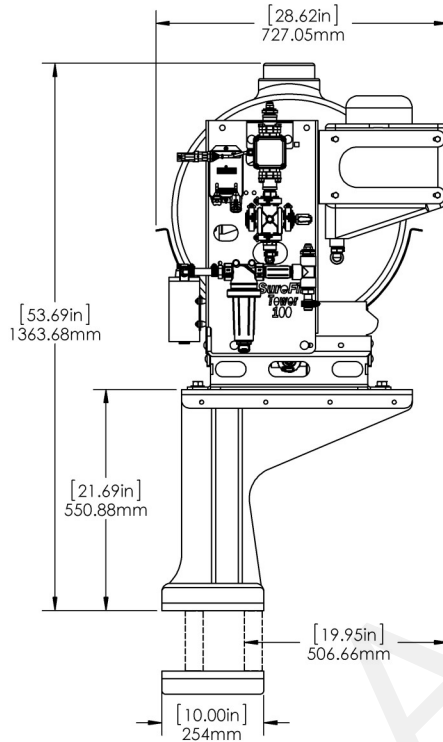


General Dimensions SureFire Catalyst™ System

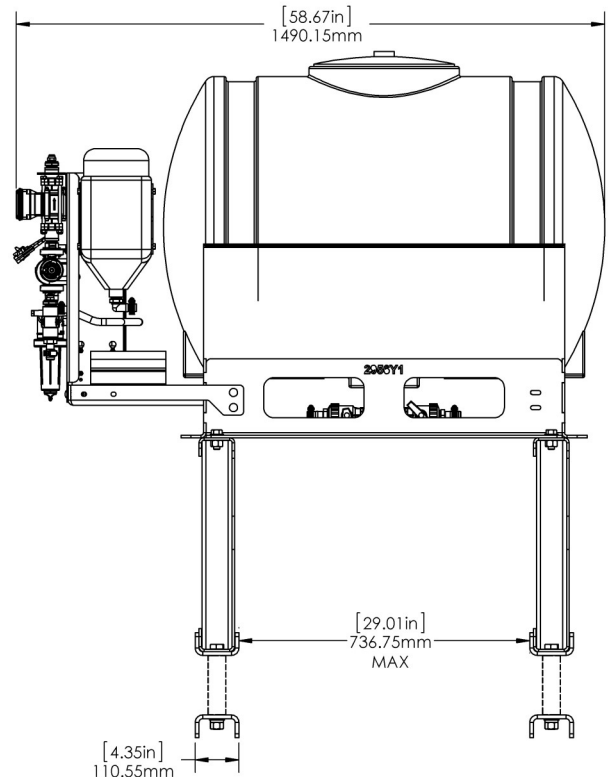
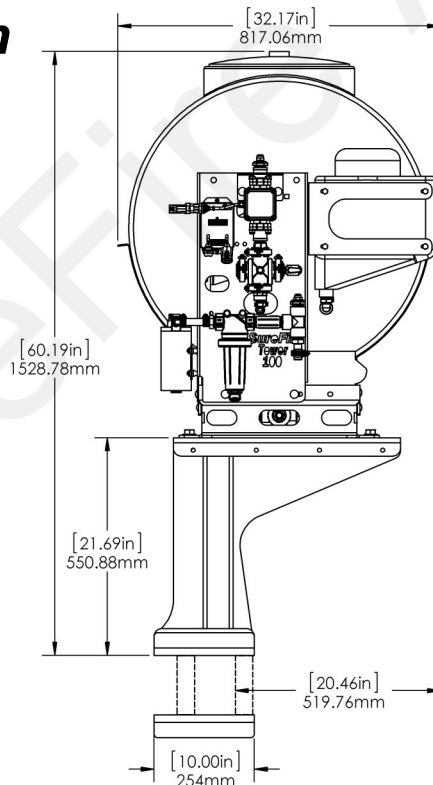
CATALYST MICRO VOLUME APPLICATION SYSTEM

The mounting brackets can be adjusted under the Catalyst™ tank base using any of the multiple slots in the tank base for flexible mounting options.

55 Gallon

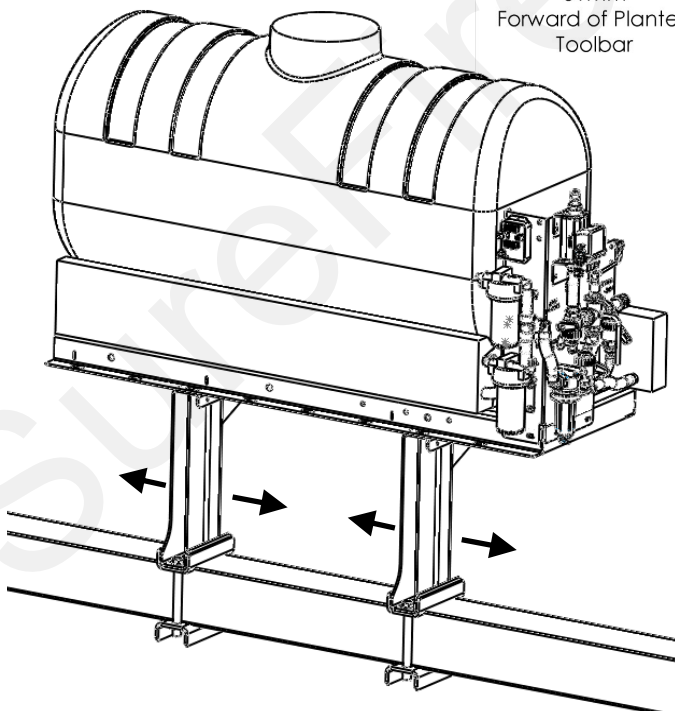
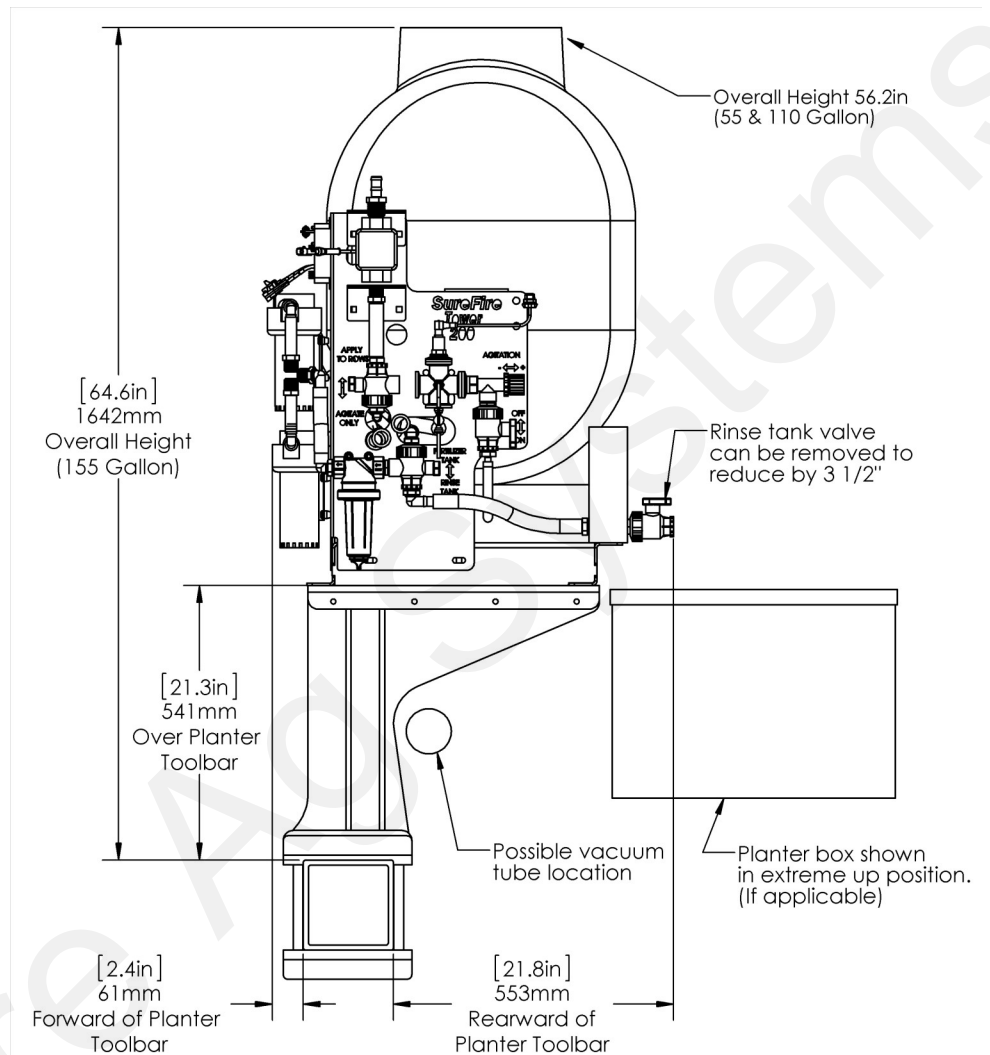


110 Gallon





SureFire Accelerator Tanks General Dimensions



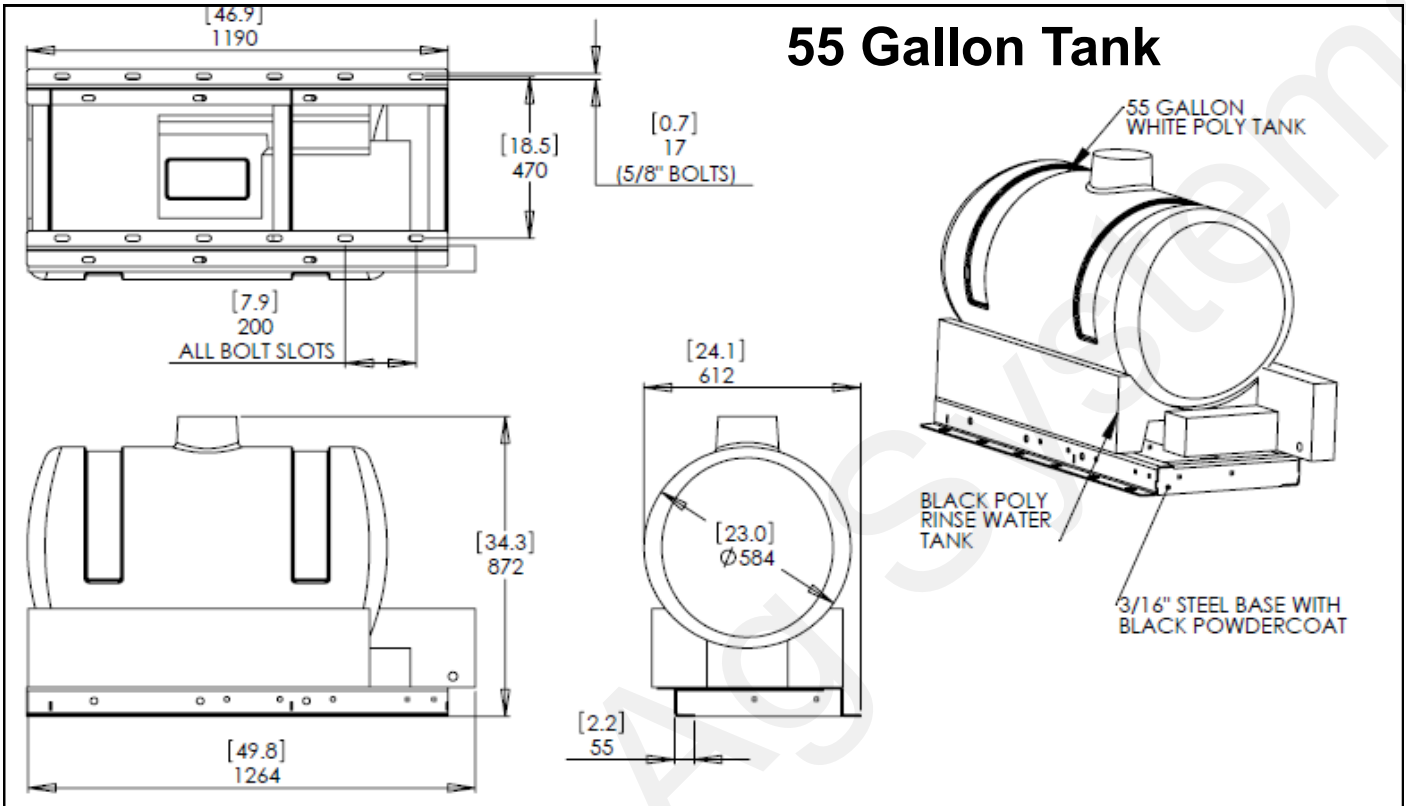
The mounting brackets can be adjusted under the Accelerator Tank base using any of the multiple slots in the tank base for flexible mounting options.



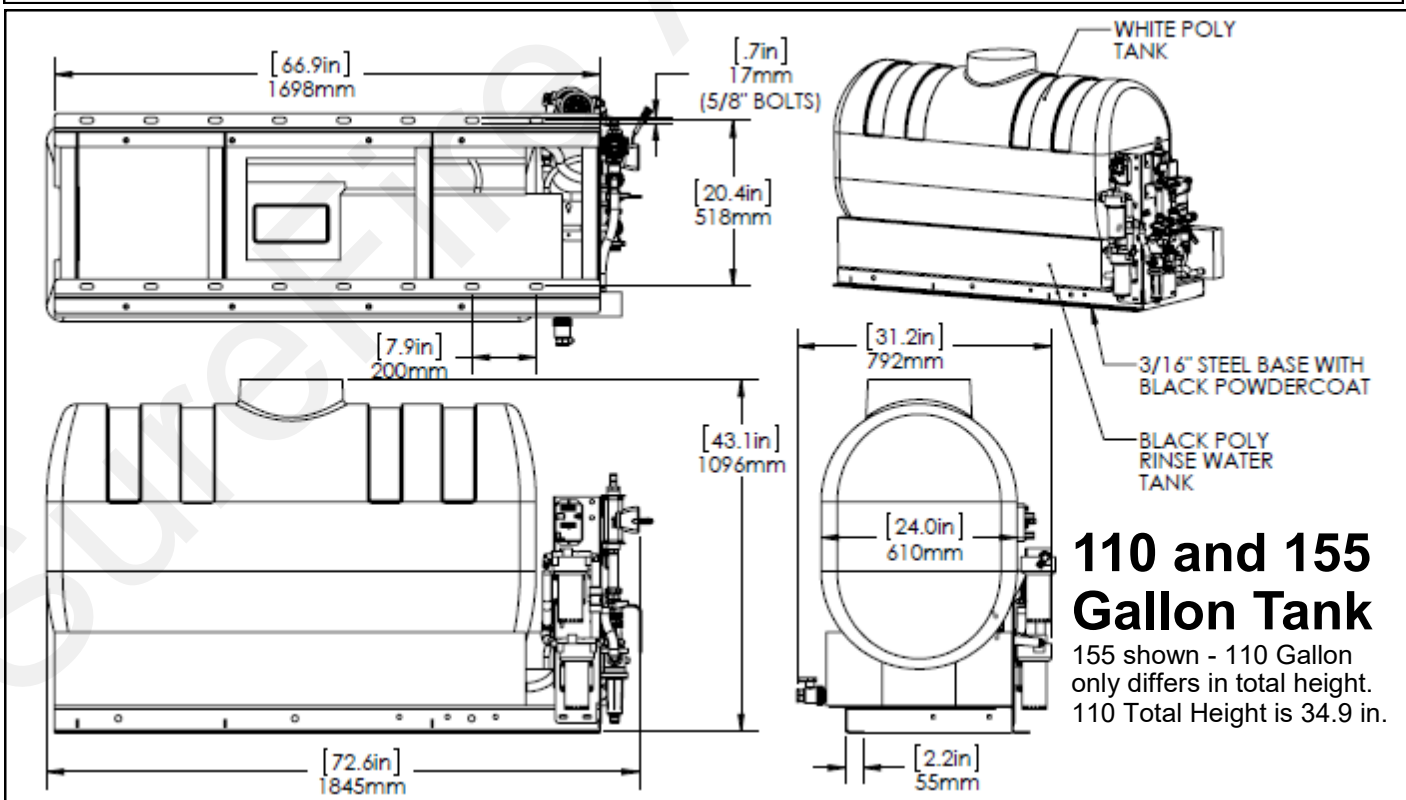
SureFire Accelerator Tanks

General Dimensions

55 Gallon Tank



110 and 155 Gallon Tank



155 shown - 110 Gallon only differs in total height. 110 Total Height is 34.9 in.