

Keeton®

Scraper-Mounted Quick-Attach Firmer Bracket Install

Kinze 4900/3000/2000

SmartFirmer & FurrowJet Compatible

WaveVision and Large Seedtube Compatible

KZ 4900/3000/2000 Quick Attach Bracket Kit: 150130 *subs from 15021, 145131*

Part Number	Description	Quantity
151029	Quick Attach Keeton Bracket Assembly	1
150132	Hardware Kit	1

Step 1:

Row Unit Preparation

- Raise the planter and remove the disc scrapers
- Check the seed tube guard and seed tube for wear and replace as necessary.

Note: Removing the gauge wheels, disk opener, and seed tube is not required but will make installation easier.

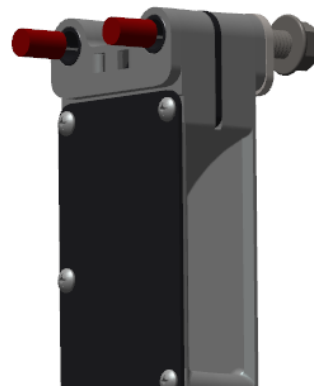
Step 2:

KINZE 3000 ROW UNITS ONLY: Mount the flat spacers on both sides of the bracket



Step 3:

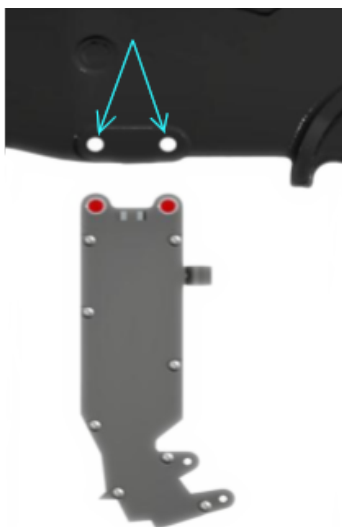
KINZE 4900 ROW UNITS ONLY: Insert the 2 red rubber plugs loosely into the middle of the mounting holes in the bracket.



Step 4:

Slide the bracket into the row unit frame and align the top holes with the disk scraper mounting holes.

Note: The foot of the keeton bracket should angle towards the rear of the row unit (The arrow in the image points forward towards the front of the planter).



Step 5:

Replace the disc scrapers over the mounting holes and bolt the whole assembly to the row unit.

- KZ 3000 and 2000: Use (2) 3/8" x 2.75" hex bolts (or 3/8" x 2.5" carriage bolts) and 3/8" nuts
- KZ 4900: Use (4) 3/8" x 1.25" flange bolts, which will thread into both sides of the row unit shank.

**Step 6:**

Complete the installation by reinstalling any row unit parts removed in step 1.

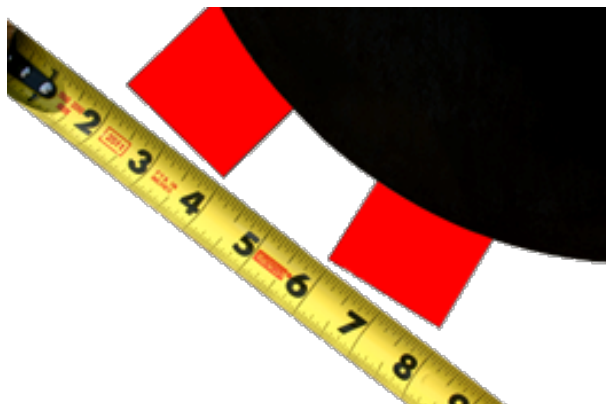
- If the seed tube was removed, reinstall and ensure it is fully seated on the lower seed tube pin.
- If the opening disks were removed, reinstall, check the contact distance, and shim as necessary. Refer to the notes below and the planter manual for proper shimming and contact of double disk openers.
- If gauge wheels were removed, reinstall according to the manufacturer's instructions.

Opening Disks Installation and Service

When servicing planter wear parts, always refer to the OEM service manual for correct service specifications. These are only general guidelines for most common models.

Setting Opening Disks Contact

Take 2 business cards and slide one card in from the top of the disk openers and one from the bottom. Then slide them towards each other, until they pinch between the disk openers. Measure the distance between the two cards. Spin the disk openers and take measurements at 3 points of rotation. Adjust shims as needed to get the correct distance of contact.



- If the gap is too wide (too much contact), you will need to add a shim to the disk opener.
- If the gap is too narrow (too little contact), you will need to remove a shim.

Correct Contact based on Blade Thickness

3.0 mm blade thickness: 1.5” – 2.5”

3.5 mm blade thickness: 1.0” - 1.5”

4.0 mm blade thickness: 3/4”– 1.0”

Note: Case IH “LeadingEdge” openers should only have approx. 1/8” of contact or less.

Replacing Opening Disks

To improve the seed trench “vee”, make sure the opener disks are not worn. Measure the diameter and refer to the table below:

Planter Model	NEW Disk Diameter (OEM)	Replace if less than:
John Deere, Kinze	15.0” (38.1 cm)	14.5” (36.8 cm)
Case IH 12xx	14.0” (35.6 cm)	13.5” (34.3 cm)
Case IH 2xxx	15.0” (38.1 cm)	14.5” (36.8 cm)
White 9xxx	16.0” (41.6 cm)	15.5” (39.4 cm)
White 8xxx	15.0” (38.1 cm)	14.0”