



396-001630

SureFire Accelerator Tanks and Pedestal Mounting Brackets

SureFire Accelerator tanks can be mounted directly above a bar using the pedestal brackets. The bracket attaches to a 6" - 8" wide bar. U-Bolts are sold separately, so you must select U-bolts below for common heights of 7" or 8" wide tubes, or use the backer plate for any height of 6" or 7" wide bar with suitable length 3/4" bolts. Pedestal brackets will work with all three sizes of Accelerator Tanks; 55, 110 and 155 gallon.

Accelerator Tank Kit Numbers:

524-01-005501—55 Gallon White Accelerator Top Fill Tank & Basin Kit

524-01-005550—55 Gallon Yellow Accelerator Top Fill Tank & Basin Kit

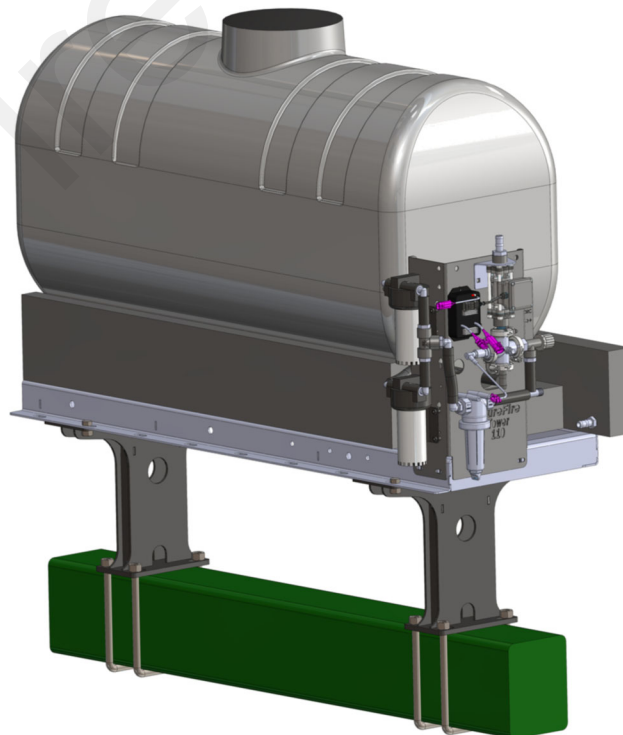
524-01-011001—110 Gallon White Accelerator Top Fill Tank & Basin Kit

524-01-011050—110 Gallon Yellow Accelerator Top Fill Tank & Basin Kit

524-01-015501—115 Gallon White Accelerator Top Fill Tank & Basin Kit

524-01-015550—115 Gallon Yellow Accelerator Top Fill Tank & Basin Kit

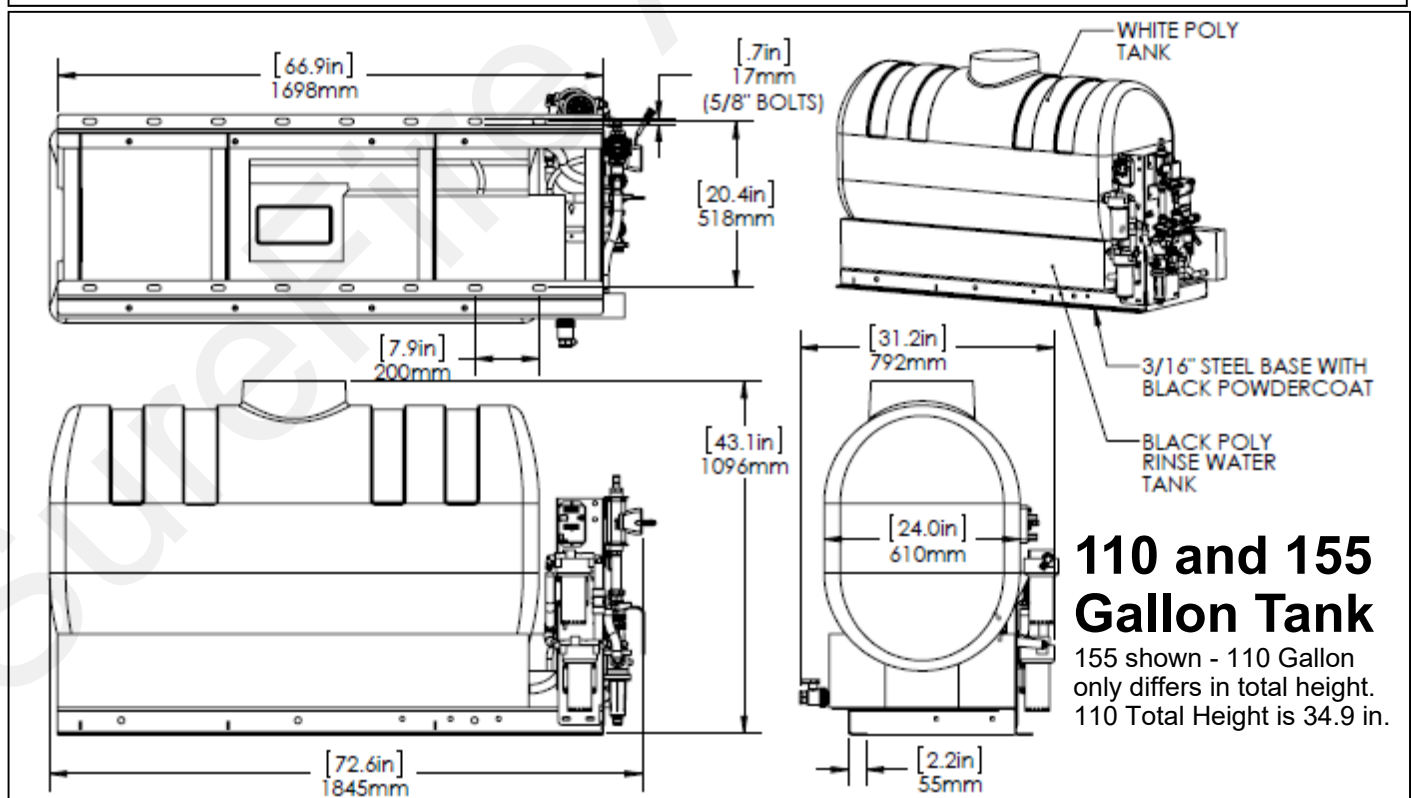
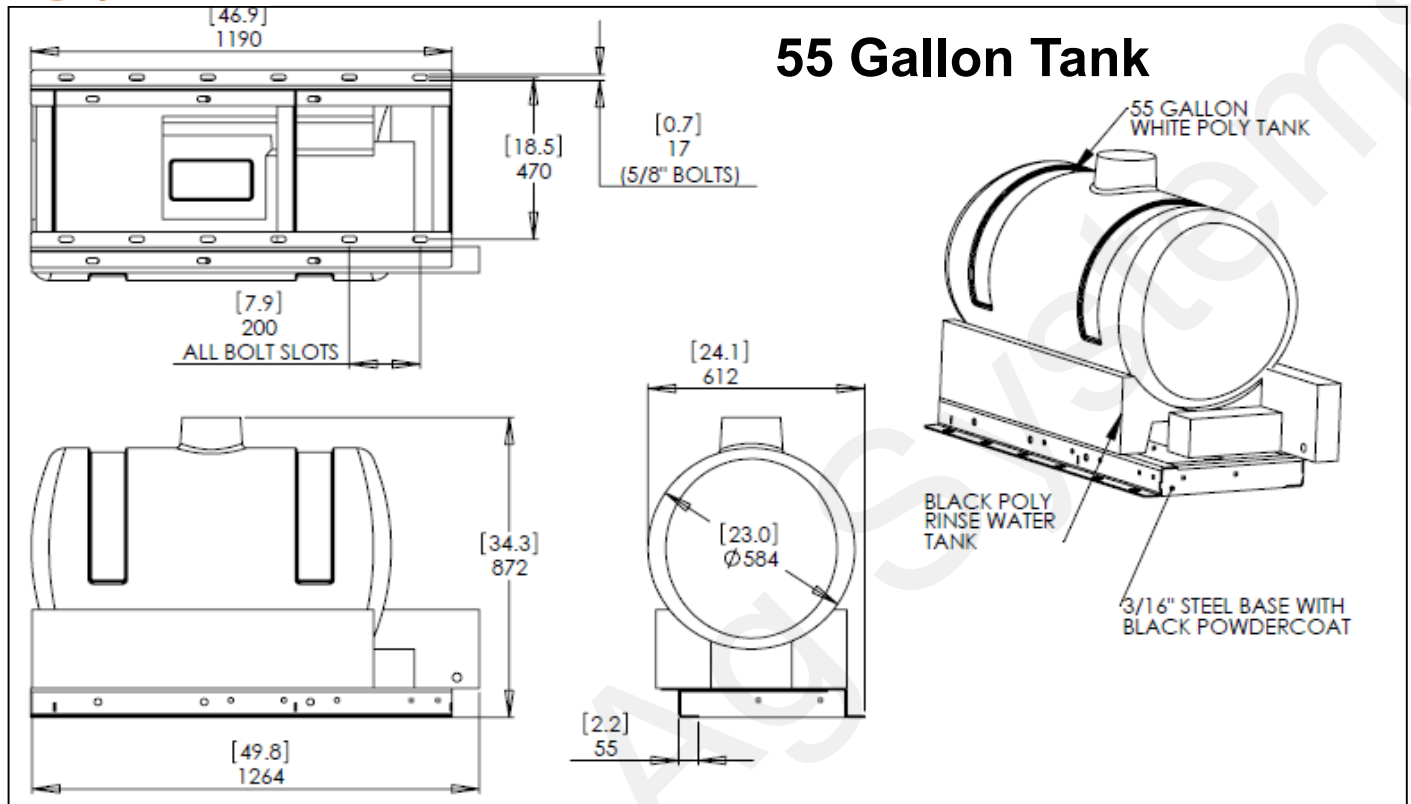
U-Bolt Description	Part #
3/4" U-Bolt Kit - fits 7" x 7" tube (include nuts, flat and lock washers)	380-1060
3/4" U-Bolt Kit - fits 8" x 10" tube (includes nuts, flat and lock washers)	380-1064
3/4" U-Bolt Kit - fits 8" x 12" tube (includes nuts, flat and lock washers)	380-1066
3/4" U-Bolt Kit - fits 8" x 16" tube (includes nuts, flat and lock washers)	380-1067
3/4" U-Bolt Kit - fits 8" x 8" tube (includes nuts, flat and lock washers)	380-1077





SureFire Accelerator Tanks

General Dimensions





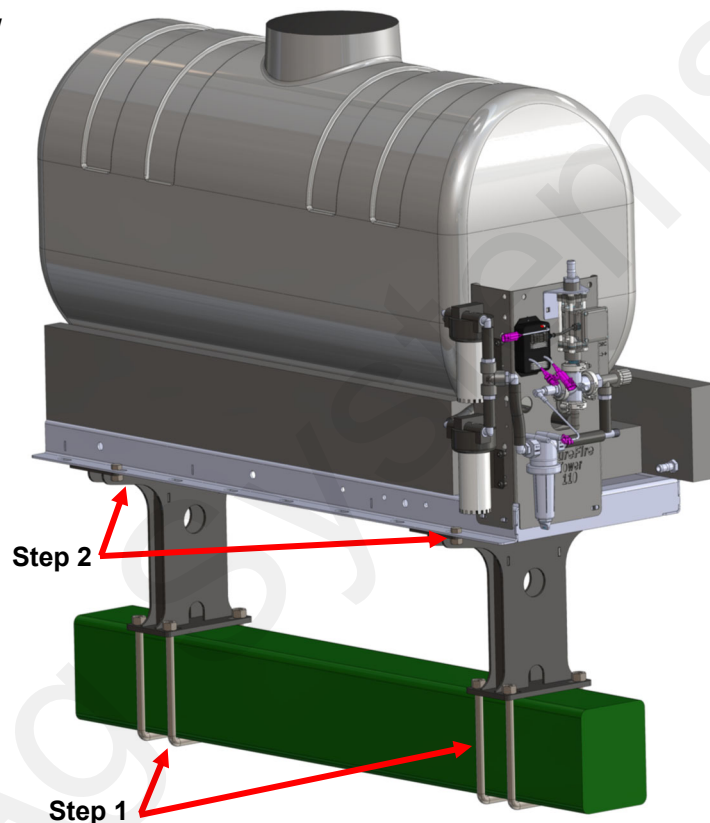
Step by Step Instructions

Step 1: Loosely u-bolt pedestal bracket to planter/ implement frame.

Step 2: Attach Accelerator tank base to pedestal with quantity four 5/8" x 1-1/2" bolts, washer and flange nut (8 sets per tank).

Step 3: Inspect tank and brackets for proper clearance and tighten all bolts.

NOTE: The pedestal brackets can be adjusted under the Accelerator Tank base using any of the multiple slots included in the tank base for flexible mounting options.



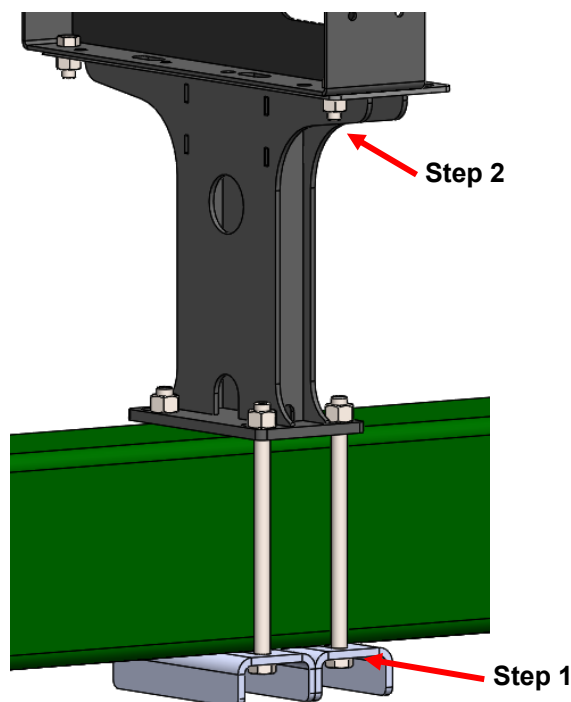
Backer Plate Instructions:

420-2015A1: Backer Plate
Kit Numbers: 515-203025

Step 1: Loosely bolt pedestal to frame/tube using 420-2015A1 backer plate and 3/4" bolts. Backer plates can be used to mount on 6" or 7" bars of any height. (4 Backer Plates required to mount two pedestals)

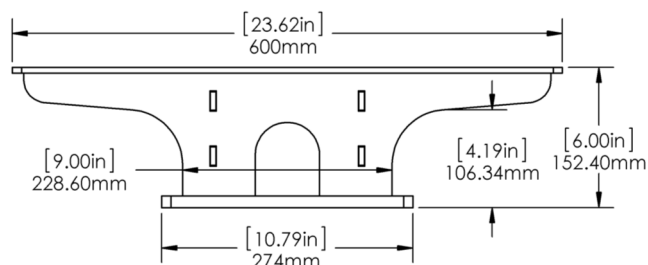
Step 2: Attach Accelerator Tank base to pedestal with quantity four 5/8" x 1-1/2" bolts, washer and flange nut (8 sets per tank).

Step 3: Inspect tank and brackets for proper clearance and tighten all bolts.





Optional Items that may be suggested for this equipment .



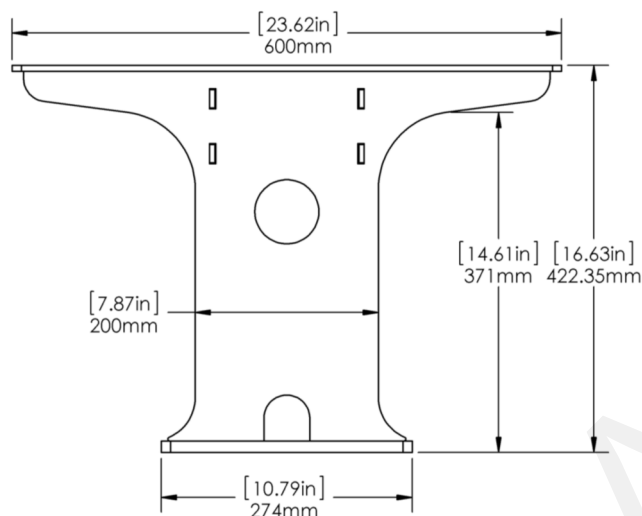
Kit Description:

6" Pedestal Kit for Saddles

Kit Numbers:

526-02-200275 (Black)

526-02-200280 (Green)



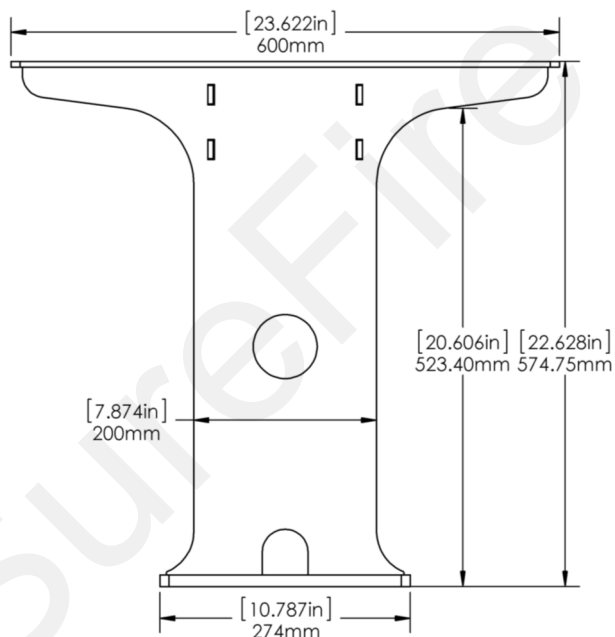
Kit Description:

16" Pedestal Kit for Saddles

Kit Numbers:

526-02-200300 (Black)

526-02-200305 (Green)



Kit Description:

22-5/8" Pedestal Kit for Saddles

Kit Numbers:

526-02-200350 (Black)

526-02-200355 (Green)