



396-001390

John Deere 30 Foot, 12 Row 1770NT/1775NT

Hitch Mount Tank Instructions

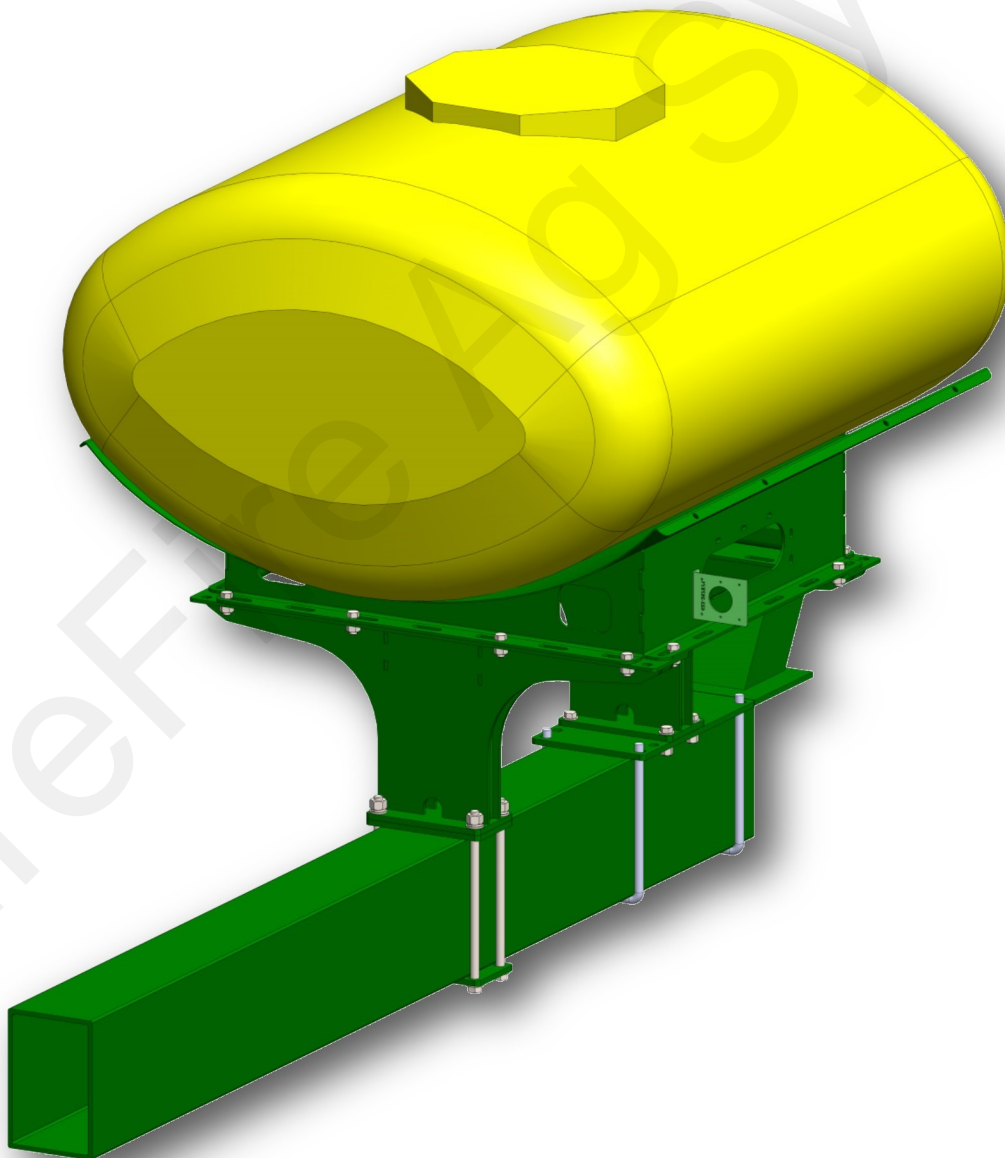
Planter Manufacturer:



JOHN DEERE

Kit Number:

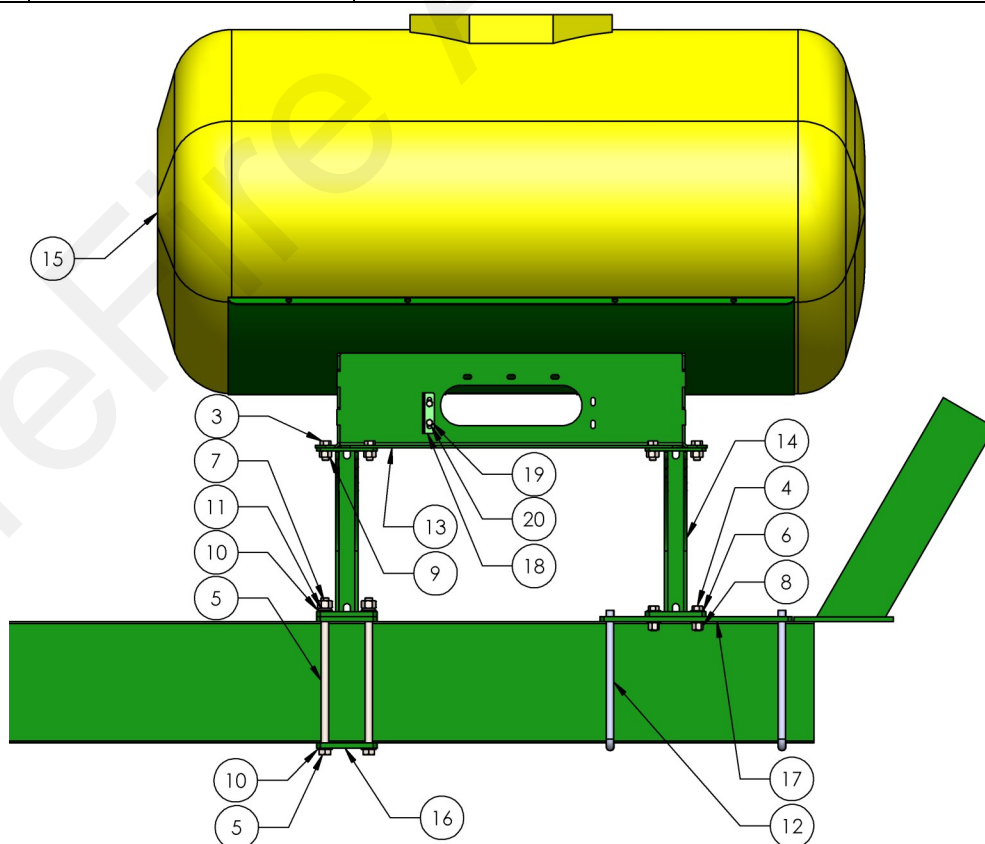
530-01-250750: 400 Gallon Elliptical Tank Kit





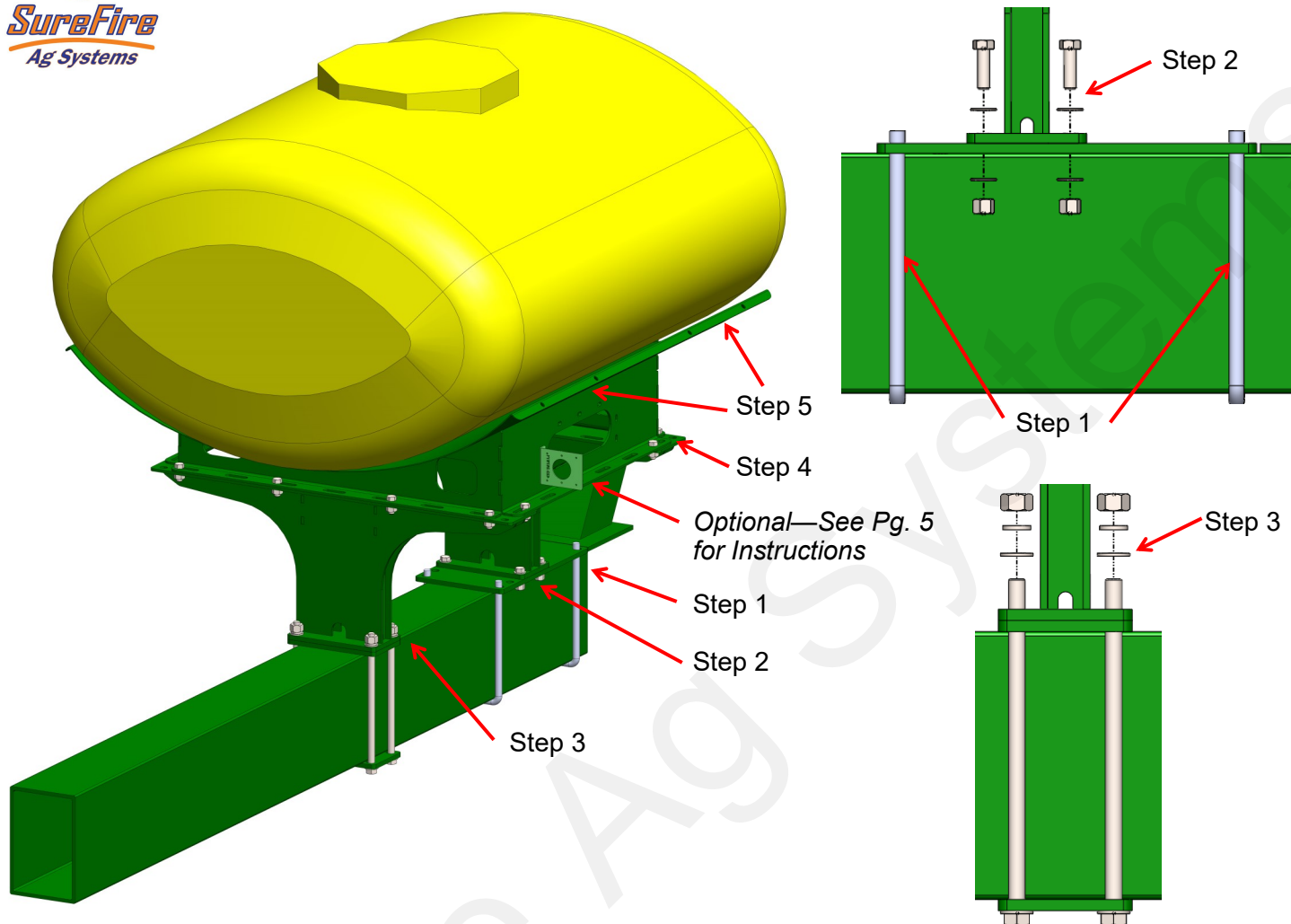
Parts List and Exploded View **Kit Number: 530-01-250750 (400 Gal)**

ITEM NO.	PART NUMBER	DESCRIPTION	QTY.
1	521-00-100255	John Deere CCS Gauge Extension Assembly	1
2	525-3000	3" Tank Strap Kit for 400-1000 Gallon	2
3	300-100108-5	5/8" x 1-1/2" Hex Head Bolt - G5	12
4	300-100200-5	5/8" x 2" Hex Head Bolt - G5	4
5	300-121500-8	3/4" x 15" Hex Head Bolt - G8	4
6	330-10	5/8" Flat Washer	8
7	320-12	3/4" Nut	4
8	321-10	5/8" Nylock Nut	4
9	323-10	5/8" Flange Nut	12
10	330-12	3/4" Flat Washer	8
11	331-12	3/4" Lock Washer	4
12	380-1066	3/4" U-Bolt Kit - Fits 8"x12" tube	2
13	421-1333A2-GN	400 Gallon Elliptical Cradle, Green	1
14	421-3136Y1-GN	22" JD Hitch Mount Pedestal	2
15	727-01-HE00400SY	Elliptical Tank - 400 Gal - Yellow	1
16	421-2023A1-GN	Bolt Plate and Spacer for JD1770NT 12R30	2
17	421-2045A1-GN	Rear Spacer Bolt Plate for JD1770NT 12R30	1
18	422-2678Y1	Bracket for Vacuum Gauge on JD Planters	1
19	300-060012-5	3/8" x 3/4" Hex Head Bolt - G5	2
20	323-06	3/8" Flange Nut	2





Step by Step Instructions



Tank Mounting Instructions:

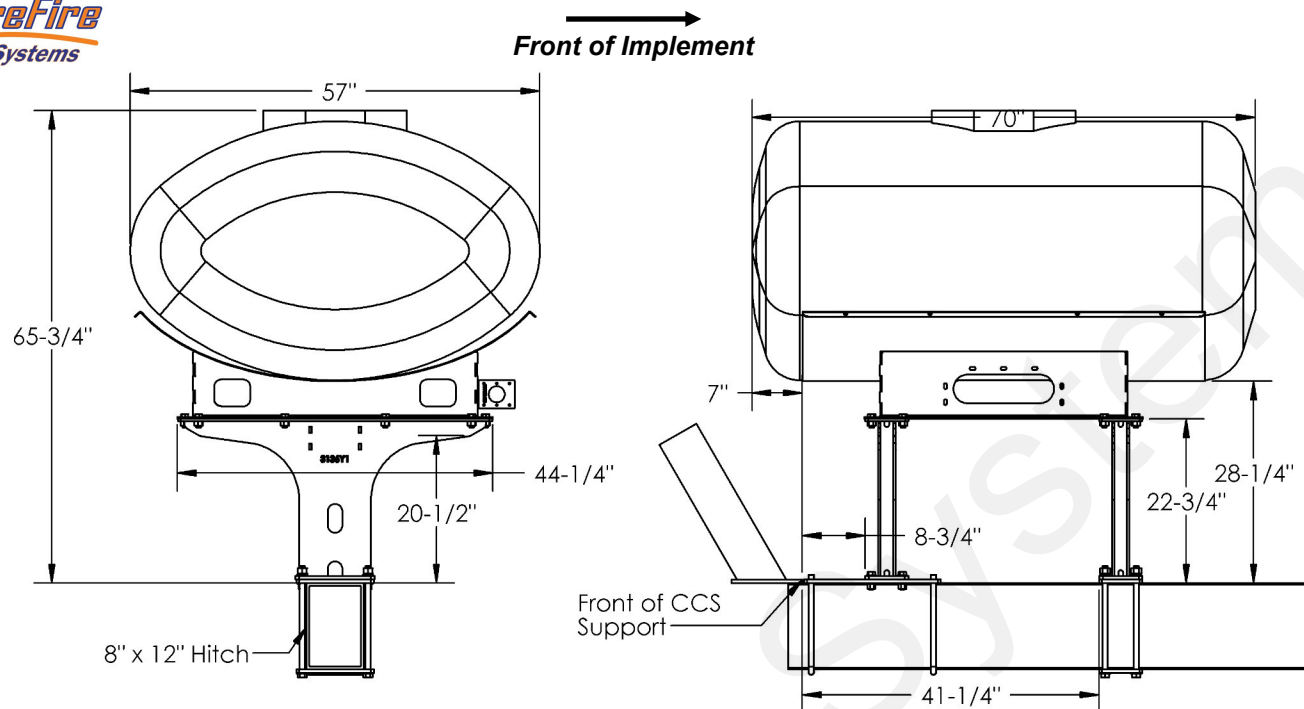
**It is recommended to remove existing vacuum gauge prior to tank installation and installation of new vacuum gauge bracket. See Page 5 for further instructions.*

1. Position rear bolt plate on planter just in front of the CCS front support plate. This will require grinding off one hook on the top of the planter hitch. Loosely attach spacer plate (Item 17) with two 3/4" U-bolts in front and rear holes only.
2. Place rear support (Item 14) on top of rear spacer plate and attach with 5/8" x 2" bolts, flat washers and flange nuts as shown. Recommended installation is rearward most bolt holes, although additional holes are added to shift tank forward if desired.
3. Loosely bolt front spacer plates (Item 16) and front tank support stand (Item 14) to hitch using 3/4" x 15" bolts, flat washers, lock washers and nuts.
4. Place tank cradle on support stands. Bolt loosely with 5/8" bolts. *(Tip: 400 gallon tank cradle can be mounted with sump forward or rearward. For installation with markers, the cradle can be rotated 90°)*
5. Install tank and secure with straps. *(This step may have already been completed)*
6. Inspect tank and tank brackets for interference and tighten all bolts.
7. Tighten straps again after the tank has been filled.

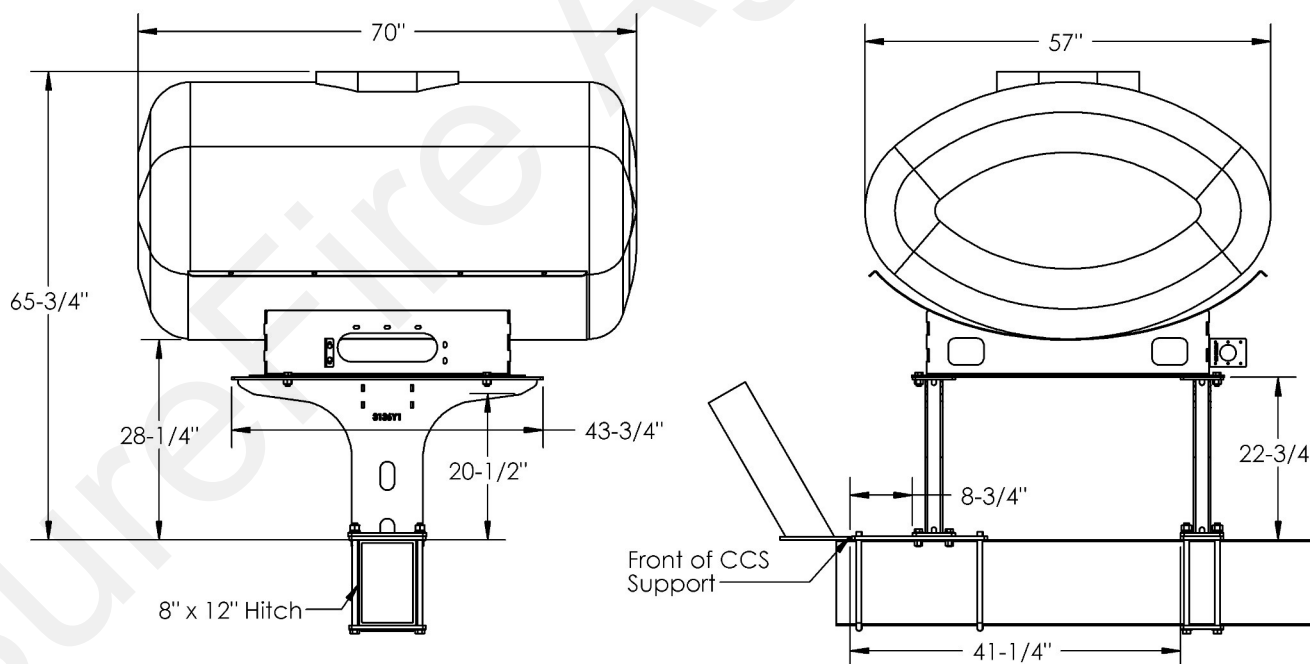
NOTE: REFER TO THE FOLLOWING PAGES FOR SPECIFIC INSTALLATION GUIDES.



400 Gallon Tank Installation Guide



JD1770NT 12R30 -NO Refuge Tank, NO markers



JD1770NT 12R30 -NO Refuge Tank, With markers (Tank/Cradle rotated 90°)



Optional Vacuum Gauge Bracket Installation Instructions

The CCS vacuum gauge must be moved so it can be seen with the tank installed.

Instructions:

1. Mount 422-2678Y1 gauge bracket to the front of the tank cradle using 3/8" bolts and flange nuts. (Shown Below)
2. Remove gauge from current mount and mount vacuum gauge to new bracket using existing hardware.
3. Use 1/4" hose mender and 3/8" OD poly tubing (P/N 521-00-100255) to extend vacuum tubing to relocated vacuum gauge.

